



TOWARDS ZERO CARBON CONCRETE

a world of innovations

- Crystalline & Liquid Reactive Technologies
- Sealing Systems for Construction Joints
- Biogas Antibacterial Technologies
- Advanced Repair & Protection Systems
- Elastic Waterproofing
- Flooring & Underlayment Techniques
- Sealing & Bonding Systems

PENETRON INTERNATIONAL

5 decades of a success story in the global industry of construction chemicals

PENETRON INTERNATIONAL is recognized as an international leader in the field of concrete waterproofing, protection and repair, as well as concrete durability.

Based in Orlando, Florida, the company was founded in the 70's, in New York, USA and for five decades, products of **PENETRON®** have established their international reputation, covering the most demanding specifications of projects in more than 100 countries worldwide.

The PENETRON GROUP has established manufacturing facilities all over the world, in the USA, Brazil, Russia and India and distributes its systems and technologies through an extended global network by providing technical support and trainings for engineers, technicians and executives from the construction industry.



Penetron International Headquarters, Orlando, Florida, USA



Penetron/Blend-Pro Manufacturing Facility, Allentown, Pennsylvania, USA



Penetron Manufacturing Facility, Salem, India

PENETRON HELLAS

20 years of successful presence in Southeast Europe

As part of the global growth, **PENETRON HELLAS S.A.**, subsidiary of PENETRON INTERNATIONAL, was established in Athens, in November 2006. Since the partnership of the CEO and President of PENETRON INTERNATIONAL, Mr. Robert Revera, with Mr. Theodor Mentzikofakis (experienced executive in the market of Construction Chemicals), for the establishment of PENETRON HELLAS S.A., “many things have been achieved and they prepare us for even more”, as the President of the group has stated.

Mr. Jozef Van Beeck, International Sales and Marketing Director of the group, member of the management team of PENETRON INTERNATIONAL and partner in the Greek subsidiary, has also stated that “the achievements of PENETRON HELLAS S.A., in such a global, but also local, difficult business environment, highlight the effectiveness of the Greek team, but also the dynamics developed by the company internationally, in recent years”.

This company does not only serve as a distribution point of **PENETRON®** products in the wider area of Southeast Europe, but also facilitates the expansion and technical support of the company's technologies. PENETRON HELLAS S.A. expanded in a second facility nearby, in May 2016, which includes the new Commercial Center of Southeast Europe and an innovative Training Academy with the Technical Support Center.

In 2020 PENETRON HELLAS S.A. also developed a logistics center for covering the fast growth of the market region.



Penetron International Logistics Center, Pennsylvania, USA



PENETRON HELLAS Facility, Athens, Greece



Penetron, Athens Training & Technical Center

PENETRON HELLAS S.A.

50, Thrakomakedonon Av., GR 136 79 Acharnes, Athens, Greece
Tel: +30 210 2448250 • info@penetron.gr • www.penetron.gr

 PenetronHellas

G.E.MH. No: 07278001000

Robert Revera
President & CEO
Penetron Group



*"The whole is greater than the sum of its parts".
#PenetronGlobalForce*



Theodor Mentzikofakis
Managing Director & Partner
Penetron Hellas S.A.

*"We accept the challenges, we are nourished by noble rivalry and strengthened by the difficulties and high demands of our goals".
#TogetherWeAreStrong*

Penetron International Executive Management Team



Robert Revera
President & CEO



Jozef Van Beeck
Director,
International
Sales
& Marketing



Florian Klouda
Director,
International
Account
Coordination



Christopher Chen
Director, North
America Sales
& Marketing



John Read
CFO



Sue Yi
Director,
Operations

PENETRON UK

Following the strategic plan of the company, the Group decided in 2025 the establishment of **PENETRON UK LTD**, as a new chapter in the global growth, for the support of the UK construction market, by introducing the PENETRON System and Technologies.

Mr. Nikolaos Mantelis, Civil/Structural Engineer MSc, an experienced executive of the U.K. construction market was selected as the General Manager of the new company for supporting the strategic plan of PENETRON in the wide region.



Nikolaos Mantelis
General Manager & Partner,
Penetron UK LTD

PENETRON developed cementitious waterproofing products and additives to create an optimal crystalline technology. Today, the PENETRON system of products is sold around the world through qualified applicators and distributors offering a broad range of concrete solutions, including crystalline waterproofing, water stops and liquid sealers. The system has been proven effective on countless major projects worldwide. The technical excellence of the products and a knowledgeable and dependable team of people have made the company the industry leader. PENETRON products are manufactured and continually optimized at our development center and production plant in the USA. All our facilities are **ISO 9001**, **ISO 14001** and **ISO 45001** certified and are backed by our product manufacturing warranty.



Waterproofing & total protection of new reinforced concrete structures... in 3 steps



STEP

01

PENETRON ADMIX® P
added to the concrete mix

PENETRON ADMIX® P 3rd generation crystalline development admixture, with added «Green Tracer» (for correct application), for permanent waterproof and durable concrete structures. Designed for use with standard and low CFP cements



Application of water expanding sealing strips **PENEBAR® SW**, at cold joints and special applications or **P-WATERSTOPS** at expansion joints

STEP

02



PENETRON ADMIX[®] SYSTEM for Total Concrete Protection

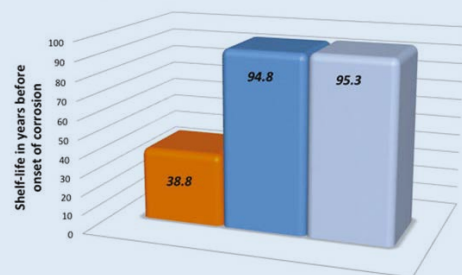
- Permanent Waterproofing
- Anti-Corrosion Protection
- Strength Improvement
- Resistance to Chemical Stress
- Resistance to Frost

} = Durable
Concrete



PENETRON ADMIX[®] P

adds 60 years
to the life cycle of concrete
in corrosive environment
(study by ACI for crystal
growth admixtures)



■ C without Penetron Admix ■ C1 with Penetron Admix ■ C2 with Penetron Admix

Concrete Admixtures **CE** Certification EN 934-2:2009 + A1:2012

PENETRON[®]
TOTAL CONCRETE PROTECTION

PRODUCT CATALOGUE

MAY 2026

CONTENTS

	Page
Cementitious waterproofing and repairing crystal growth concrete systems for total and permanent waterproofing	8
Protection against biodeterioration & sulfuric acid attack for biogas facilities	10
Waterproofing products and liquid concrete hardeners with integral action	11
Liquid water repellent systems	12
Cementitious and quartz sand hardeners	12
Stabilizers for bitumen membranes and bitumen tiles	13
Cementitious waterproofing and repairing systems with polymers / fiberglass mesh	13
Sealing / injection waterproofing and grouting systems	15
Elastic strip waterstops for concrete joints	16
Water expanding systems (strips) for construction joints	19
Enhancing mortar admixtures / primers	20
Repairing mortars with modified polymers	21
Quartz sand for mortars, epoxy and polyurethane products	23
SiMP® and polyurethane based elastic liquid waterproofing systems	25
Polyurethane based protection coatings / primers	27
Solvents and reinforcement for SiMP® and polyurethane based waterproofing systems	29
Tanks' polyurethane based waterproofing products / primers and pool coatings	30
Epoxy and polyurethane flooring systems / protective paints	31
Epoxy / polyurethane primers	31
Epoxy / polyurethane / polyurias, for floor coatings and protective paints	34
Electrically conductive flooring systems	40
CHEMORESIN PU-Beton: polyurethane systems for special applications	41
Flooring system for refrigerators and freezers	42
Solvents and supplementary products	44
Cementitious self leveling flooring systems / primers	46
Bonding systems for wooden floors, tiles	48
Elastic sealing and bonding systems / primers / PE backing rods	48
Supporting equipment and tools	52
General sales terms	55
Alphabetical product index	56

WARRANTY OF PENETRON PRODUCTS

PENETRON INTERNATIONAL LTD and PENETRON HELLAS S.A. warrant that the products manufactured, under certified ISO procedures, shall be free from material defects and will conform to formulation standards and contain all components in their proper proportion. Should any of the products be proven defective, the liability to PENETRON INTERNATIONAL LTD and PENETRON Hellas S.A. shall be limited to replacement of the material proven to be defective and shall in no case be liable otherwise or for incidental or consequential damages. PENETRON INTERNATIONAL LTD and PENETRON Hellas S.A. make no warranty as to merchantability or fitness for a particular purpose and this warranty is in lieu of all other warranties expressed or implied. User shall determine the suitability of the product for his intended use and assume all risks and liability in connection therewith.

Whilst care has been taken to ensure that the information given in this document is correct, it should not be part of any contract. Buyers of products will have to verify, through companies' websites, whether companies have made some changes to the specifications or the application method, as from the time of printing of the form.

GENERAL SALES TERMS OF PENETRON HELLAS SA

The detailed sales terms are written at the end of catalogue, on page 55.

CEMENTITIOUS WATERPROOFING AND REPAIRING CRYSTAL GROWTH CONCRETE SYSTEMS FOR TOTAL AND PERMANENT WATERPROOFING



PENETRON®

SHORT DESCRIPTION & APPLICATIONS

Cementitious, concrete surface applied (slurry application) or for filling cavities (pourable application), crystal growth waterproofing mortar. **Indicative mixing:** For surface application, 1 bag is mixed with 12–13 L water, but the mixing of half bag with 6-6,5 L water is recommended. For spraying application, increase the mixing water to 14-15 L/bag. For pourable application, mix with 15-18 L water/bag depending the required workability.

CONSUMPTION INFORMATION

Indicatively, the consumption in concrete surface application is 1,4-1,6 Kg/m² in total 2 coats or 1 bag for approx. 14-16 m². In pourable application, consider a consumption of 1,2-1,3 Kg of product for filling 1 L void.

CODIFICATION	COLOR	PACKAGING	PACKAGING INFO	PALLET
10.30000	Grey	Pail 5 Kg	132 Pails / Pallet	660 Kg
10.00001	Grey	Bag 22,70 Kg	48 Bags / Pallet	1.089,60 Kg
10.00024	White	Bag 22,70 Kg	48 Bags / Pallet	1.089,60 Kg



PENETRON® INJECT Set (A+B)

SHORT DESCRIPTION & APPLICATIONS

New technology, two component integral crystalline waterproofing crack-injection-system. **Application by cement-injection-pump.** Suitable for permanent waterproofing and repairing concrete cracks in basements, tunnels, tanks, pools, bridges, sewage tanks, canals, construction joints etc. **Mixing:** In 9 or 10 L water add 2 or 1 L liquid FL (component B) and afterwards the powder P-25 Kg (component A) for respectively ~2 hours or up to 1 hour workability.

CONSUMPTION INFORMATION

The two mixing ratio respectively define large or small workability. Thus, 2 L liquid FL pail, can be used for 2 packages of 25 Kg powder P. For enhancing the fluidity we can add 0,5–1 L extra water. Thus, we achieve the sealing of even smaller cracks. Indicatively, each set seals 20 – 22 L of voids.

CODIFICATION	COLOR	PACKAGING	PACKAGING INFO	PALLET
10.21001	Grey	Component A Powder P 25 Kg Bag	33 sets of Pails / Pallet	~ 900 Kg
10.21002	Off Yellow	Component B Fluid FL 2 L Pail	33 sets of Pails / Pallet	~ 900 Kg



PENETRON ADMIX® P / PENETRON ADMIX®

NEW PRODUCT

SHORT DESCRIPTION & APPLICATIONS

Crystal growth, cementitious powder, waterproofing system added to concrete as an admixture. **The product can be used in the ready mix plant with the form of powder, directly added in the pre-weighted dry parts of concrete (in the lift-band), before the water addition or by addition in the mix truck, at the job site, right after the mixing (with electric mixer) with water – in the special mixing pails with measure.** **Mixing water ratio:** mix well ½ of 18 Kg bag with 11,5 L water. The small packaging of 3,75 Kg pail is convenient for the production of waterproofed mortars or small quantity of concrete in a small mixer. **Mixing time in the mix truck or small mixer is at least 5 min.** It also contains green tracer as an indicator for the right dosage laboratory control. **PENETRON ADMIX® P is an upgraded, chemically active, crystal-forming concrete admixture for use with standard and low carbon footprint cements.**

CONSUMPTION INFORMATION

The recommended PENETRON ADMIX® P ratio for permanently waterproofed concrete is 0,8-1% by weight of cement. For regular concrete ~300 Kg cement, we use 3 Kg product powder per m³ of concrete. E.g. for 9 m³ mix truck we use: 3 Kg x 9 = 27 Kg, that is 1½ PENETRON ADMIX® P bag. It is easier to cut in half the bags, then mix 3 half bags in 3 mixing pails with 11,5 L water each. For the production of waterproofed mortars (cement content >250 Kg/m³), the mixing of 0,5-1,0 Kg PENETRON ADMIX® P per 50 Kg of cement is recommended.

CODIFICATION	COLOR	PACKAGING	PACKAGING INFO	PALLET
10.00029 / 10.30003	Grey	Pail 3,75 Kg	132 Pails / Pallet	495 Kg
10.00026 / 10.00004	Grey	Bag 18 Kg	48 Bags / Pallet	864 Kg



PENETRON ADMIX® P SOLUBLE BAGS / PENETRON ADMIX® SOLUBLE BAGS

**NEW
PRODUCT**

SHORT DESCRIPTION & APPLICATIONS

Crystal growth, cementitious powder, waterproofing system added to concrete as an admixture. Same technology as the above existing packaging of PENETRON ADMIX® P, but with the ability, due to its water soluble packaging, of adding it directly to the mix truck (without previous mixing with water). It also contains green tracer as an indicator for the right dosage laboratory control.

To PENETRON ADMIX® P Soluble Bags is an upgraded, chemically active, crystal-forming concrete admixture for use with standard and low carbon footprint cements.

CONSUMPTION INFORMATION

Based on the indicative ratio of 0,8-1% by weight of cement, we add, one by one the water soluble bags, in the mix truck, same quantity as the total m³ of concrete of the mix truck. Attention: mix in the mix truck in high speed for at least 5 - 10 min, after the addition of the last package of the soluble bag.

CODIFICATION	COLOR	PACKAGING	PACKAGING INFO	PALLET
10.00027 / 10.00016	Grey	Water Soluble Bag 3 Kg	6 Bags / Pail = 18 Kg	33 Pails / 594 Kg



PENETRON® PLUS

SHORT DESCRIPTION & APPLICATIONS

Crystal growth, cementitious mortar with quartz aggregates for dry-shake applications on horizontal concrete surfaces, which offers, at the same time, surface hardening and permanent waterproofing.

CONSUMPTION INFORMATION

The PENETRON PLUS® consumption, for the dryshake application on horizontal fresh concrete surfaces, is 0,6-1,0 Kg/m², depending on the requirements of the flooring hardening.

CODIFICATION	COLOR	PACKAGING	PACKAGING INFO	PALLET
10.00008	Grey	Bag 18 Kg	48 Bags / Pallet	864 Kg



PENECRETE MORTAR®

SHORT DESCRIPTION & APPLICATIONS

Crystal growth, cementitious waterproofing and repairing mortar. Supports all PENETRON® waterproofing systems. Mixing: indicatively for approx. 1 bag, 4 L of water are required. The mixing of small quantities to a trowelable mortar consistency is recommended.

CONSUMPTION INFORMATION

For fillings, the indicative consumption is approx. 2 Kg/L or 11 L per 22,70 Kg bag. For construction joints or cracks repair, the indicative consumption is 1,3-1,5 Kg/linear meter.

CODIFICATION	COLOR	PACKAGING	PACKAGING INFO	PALLET
10.30005	Grey	Pail 5 Kg	132 Pails / Pallet	660 Kg
10.00002	Grey	Bag 22,70 Kg	48 Bags / Pallet	1.089,60 Kg



SURFIX™ HI BUILD

**NEW
PRODUCT**

SHORT DESCRIPTION & APPLICATIONS

SURFIX™ HI-BUILD is a high strength repairing and crystalline waterproofing mortar for concrete. It is ideal for application on horizontal, vertical and overhead surfaces. It is used to restore a wide range of deteriorated concrete structures. Ideal for concrete substrates where aggregate coverage has been damaged. Use in conjunction with Penetron crystalline mortar for permanent waterproofing and restoration of surfaces. Suitable for low speed wet spray or trowel application.

CONSUMPTION INFORMATION

1 Bag 22,7 kg fills ~0,01 m³ or covers ~0,47 m² of 25 mm thickness. Applied in thicknes of 6-51 mm.

CODIFICATION	COLOR	PACKAGING	PACKAGING INFO	PALLET
10.20011	Grey	Bag 22,70 Kg	48 Bags / Pallet	1.089,60 Kg



PENNEPLUG®

SHORT DESCRIPTION & APPLICATIONS

Rapid setting, crystal growth cementitious waterplug, designed to stop active water leaks and moisture ingress. Supports all PENETRON® waterproofing systems. In the mixing, a small quantity of water is required, forming the material into a wedge and always wearing rubber gloves.

CONSUMPTION INFORMATION

Indicatively, the consumption for voids filling is 1,2-1,4 Kg/L.

CODIFICATION	COLOR	PACKAGING	PACKAGING INFO	PALLET
10.30004	Grey	Pail 4 Kg	132 Pails / Pallet	528 Kg
10.00003	Grey	Bag 18 Kg	48 Bags / Pallet	864 Kg
10.00011	Grey	Pail 25 Kg	33 Pails / Pallet	825 Kg

PROTECTION AGAINST BIODETERIORATION & SULFURIC ACID ATTACK FOR BIOGAS FACILITIES



PENETRON® ARC

**NEW
PRODUCT**

SHORT DESCRIPTION & APPLICATIONS

PENETRON® ARC is a specially designed, active, inorganic, protective coating for anaerobic conditions. It is applied to concrete surfaces in combination with PENETRON® and PENETRON ADMIX® P crystal growth systems where anaerobic conditions exist and produce strong acids, such as sulfuric acid in the gas zone. PENETRON® ARC is activated by sulfuric acid, transforming the coating into a durable shell that protects and extends the life span of the concrete. It is applied to wastewater and biogas treatment plants, prefabricated concrete sewer pipes and facilities using sulfuric acid baths.

CONSUMPTION INFORMATION

The total coverage of one set (18 kg component A and 5,5 L component B) of PENETRON ARC is 11-12 m².

CODIFICATION	COLOR	PACKAGING	PACKAGING INFO	PALLET
10.13005	Off white	Component A Powder Bag 18 Kg	48 Bags / Pallet	864 Kg
10.13006	Transparent	Component B Fluid Pail 5,5 L	48 Pails / Pallet	264 L / ~278 Kg



PENETRON® BIOMIC®

**NEW
PRODUCT**

SHORT DESCRIPTION & APPLICATIONS

PENETRON® BIOMIC is an antimicrobial admixture, added to the concrete mix at the time of batching. It creates a molecular bond with the concrete preventing its microbiologically influenced corrosion (MIC). Microbes are electrophysically destroyed upon contact with concrete containing PENETRON® BIOMIC. It protects the concrete from damage caused by hydrogen sulfide gas. It can also be used in combination with PENETRON® ADMIX P. It is applied in biogas plants, at concrete shafts and tanks, or concrete pipes. It can be mixed for use as a microbial protection in the first layer of PENETRON®.

CONSUMPTION INFORMATION

For prevention and protection against MIC the recommended dosage of PENETRON® BIOMIC is 5 L/m³, replacing 5 L/m³ of water. PENETRON® BIOMIC is added in PENETRON by 50 ml per 1,6 kg of PENETRON, in the mixing water.

CODIFICATION	COLOR	PACKAGING	PACKAGING INFO	PALLET
10.00025	Blue	Pail 19 L	33 Pails / Pallet	627 L / ~700 Kg
-	Blue	Drum 208 L	-	-
-	Blue	Bulk 1041 L	1 Bulk / Pallet	1041 L / ~1162 Kg

WATERPROOFING PRODUCTS AND LIQUID CONCRETE HARDENERS WITH INTEGRAL ACTION



PENESEAL PRO® RTU

SHORT DESCRIPTION & APPLICATIONS

Spray applied liquid sealer, which forms a sub-surface barrier, that protects concrete against positive water penetration (strength increase) and seals existing cracks. Protects above ground concrete structures, exposed to weather conditions. Ideal for concrete roofs, podium decks, bridge decks, terraces, runways and driveways.

CONSUMPTION INFORMATION

Ready to use material. In horizontal surfaces, the consumption is 1 L for 4-6 m². Intense air and high temperatures increase consumption. Important: after curing, the material must be activated with 3 successive water floods per day (intense water floods).

CODIFICATION	COLOR	PACKAGING	PACKAGING INFO	PALLET
10.00019	Transparent	Pail 6 Kg	56 Pails / Pallet	336 Kg
10.00017	Transparent	Pail 19 L	36 Pails / Pallet	684 L / ~ 848 Kg



PENESEAL™ FH CONCENTRATE 1:1

SHORT DESCRIPTION & APPLICATIONS

Spray applied, chemically reactive, water based liquid sealer that penetrates concrete and masonry building materials, protecting, preserving and strengthening them permanently. Very strong dust stabilizer. Important: the material is concentrated and diluted with 1:1 water.

CONSUMPTION INFORMATION

The mixture consumption, in flooring applications, is 1 L for 4-5 m², depending on the substrate absorbency. Proportionally, the 19 L pail, after dilution (~38 L), covers 150-180 m².

CODIFICATION	COLOR	PACKAGING	PACKAGING INFO	PALLET
10.00018	Transparent	Pail 4 Kg	56 Pails / Pallet	224 Kg
10.00010	Transparent	Pail 19 L	36 Pails / Pallet	684 L / ~ 923 Kg



PENESEAL™ FH-PS

SHORT DESCRIPTION & APPLICATIONS

Nanotechnology, spray applied, chemically reactive, water based, liquid sealer that, penetrates concrete and high density (less absorbing) mortars, protecting, preserving and strengthening them permanently. Very strong dust stabilizer.

CONSUMPTION INFORMATION

The product is ready to use. The consumption, in high density floors, is 1 L for 10-12 m², depending on the substrate absorbance. Proportionally, the 19 L pail, covers 190-228 m².

CODIFICATION	COLOR	PACKAGING	PACKAGING INFO	PALLET
10.00021	Transparent	Pail 4 Kg	56 Pails / Pallet	224 Kg
10.00020	Transparent	Pail 19 L	36 Pails / Pallet	684 L / ~ 725 Kg



PENEGUARD™

NEW PRODUCT

SHORT DESCRIPTION & APPLICATIONS

PENEGUARD™ is a ready to use, specially formulated liquid copolymer that reinforces the normal and hardened surface of concrete and cementitious screeds, forming a protective finish that is resistant to water and stains. After its application to the surfaces, using a polishing machine, it reveals an aesthetic high gloss finish, like a wax with high shine and durability. It is combined as a finishing layer with anti-polluting properties, after the application of PENESEAL™ FH systems.

CONSUMPTION INFORMATION

As a polishing product 34-49 m² / L. As a sealing product 10-15 m² / L.

CODIFICATION	COLOR	PACKAGING	PACKAGING INFO	PALLET
10.00023	Transparent	Pail 4 Kg / 3,8 L	56 Pails / Pallet	224 Kg
10.00022	Transparent	Pail 19 L	36 Pails / Pallet	684 L / ~ 691 Kg

LIQUID WATER REPELLENT SYSTEMS



PENESIL SILOX™

SHORT DESCRIPTION & APPLICATIONS

One component, ready to use, transparent siloxane – silane water repellent for absorbing substrates, such as stone, marble, tiles, mortars. It is applied in 2-3 coats fresh on fresh with spray, brush or roll on dry and clean surface. **Important:** during application, remove all material residues from the surface. Do not use on non absorbent surfaces. Intense odour, good ventilation of the application area is required. A discoloration test on a small surface is recommended prior to application.

CONSUMPTION INFORMATION

Indicatively, 3-4 m²/L per coat. Applied in 2-3 coats. High absorbent surfaces may require a substantial consumption increase.

CODIFICATION	COLOR	PACKAGING	PACKAGING INFO	PALLET
14.026-49-L01	Transparent	Pail 1 L	12 Pails / Pallet	-
14.026-49-L05	Transparent	Pail 5 L	4 Pails / Pallet	-
14.026-49-L20	Transparent	Pail 20 L	33 Pails / Pallet	660 L / ~515 Kg

CEMENTITIOUS AND QUARTZ SAND HARDENERS



PENEFLOOR™ HARDENER

SHORT DESCRIPTION & APPLICATIONS

Cement based dry shake hardener with quartz sand and color pigments for industrial flooring use.

CONSUMPTION INFORMATION

For industrial flooring use, the indicative consumption is 2-5 Kg/m².

CODIFICATION	COLOR	PACKAGING	PACKAGING INFO	PALLET
12.10022.02	Grey	Bag 25 Kg	60 Bags / Pallet	1.500 Kg
12.10022.08	Terracotta	Bag 25 Kg	60 Bags / Pallet	1.500 Kg
12.10022.09	Dark Green	Bag 25 Kg	60 Bags / Pallet	1.500 Kg
12.10022.12	Light Beige	Bag 25 Kg	60 Bags / Pallet	1.500 Kg
12.021-610	Ochre	Bag 25 Kg	60 Bags / Pallet	1.500 Kg
12.10022.10	Light Brown	Bag 25 Kg	60 Bags / Pallet	1.500 Kg
12.10022.11	Off-white	Bag 25 Kg	60 Bags / Pallet	1.500 Kg



QUARTZ SAND INDUSTRIAL

SHORT DESCRIPTION & APPLICATIONS

Special quartz sand mix for dry-shake use as hardener for industrial floors. Approximate mixing with cement 1: 1.

CONSUMPTION INFORMATION

Approximate cement mixture consumption as dry-shake 2 - 4 kg/m².

CODIFICATION	COLOR	PACKAGING	PACKAGING INFO	PALLET
12.00022.26	Off-white	Bag 25 Kg	64 Bags / Pallet	1.600 Kg

STABILIZERS FOR BITUMEN MEMBRANES AND BITUMEN TILES



PENECOAT™ STABILIZER

SHORT DESCRIPTION & APPLICATIONS

Breathing, transparent, bitumen membranes, tiles and mosaics stabilizer. Cost efficient.

CONSUMPTION INFORMATION

Diluted with water, in ratio 1:1. 1 Kg of undiluted dispersion gives 6-7 m² of total surface.

CODIFICATION	COLOR	PACKAGING	PACKAGING INFO	PALLET
11.501011	White	Pail 5 Kg	56 Pails / Pallet	280 Kg
11.501010	White	Pail 20 Kg	30 Pails / Pallet	600 Kg

CEMENTITIOUS WATERPROOFING AND REPAIRING SYSTEMS WITH POLYMERS / FIBERGLASS MESH



PENETRON® SEAL COAT™

SHORT DESCRIPTION & APPLICATIONS

Waterproofing, cementitious coating mortar with polymers. Applied, depending on the project requirements as: a) sealer of the concrete porous, after mixing each bag with only ~5,7-6,0 Kg water or for increased adhesion with the mixing of 4 Kg water and ~2 Kg of PENETRON® ACRYLIC BONDCRETE™ adhesion enhancer.

b) flexible, two components system with the mixing of 2-3 Kg water and 4 Kg PENECRYL™ ELASTIC. Applicable on concrete surfaces, mortars, bricks or stones with medium mobility and capillary bridging requirements.

c) waterproofing, UV and external conditions resistant, elastic system with the mixing of only 12 Kg PENECRYL™ ELASTIC. Applied as above, but on surfaces with higher mobility requirements.

CONSUMPTION INFORMATION

Generally, the system's consumption is 2,5-3,0 Kg/m² in total, for two coats without water calculation. a) 1 bag of PENETRON® SEAL COAT™ gives in total as porous sealer (only with water) ~9 m², while, with adhesion increase, 1 bag of PENETRON® SEAL COAT™ mixed with 4 Kg of water and ~2 Kg of PENETRON® ACRYLIC BONDCRETE™ gives in total ~10 m². b) 1 bag of PENETRON® SEAL COAT™ mixed with 2-3 Kg of water and 4 Kg of PENECRYL™ ELASTIC gives in total as a flexible system ~10,5 m². c) 1 bag of PENETRON® SEAL COAT™ mixed with only 12 Kg of PENECRYL™ ELASTIC gives in total as a flexible system ~14 m².

CODIFICATION	COLOR	PACKAGING	PACKAGING INFO	PALLET
10.00006	Grey	Bag 22,70 Kg	48 Bags / Pallet	1.089,64 Kg
10.00009	White	Bag 22,70 Kg	48 Bags / Pallet	1.089,64 Kg



PENECRYL™ ELASTIC

SHORT DESCRIPTION & APPLICATIONS

Styrene / acrylic copolymer emulsion with 57% high concentration of solids, that provides elasticity in mortars. Component that improves the elasticity and the chemical resistance of PENETRON® SEAL COAT™. Applicable self same or after being mixed with water in ratio from 1:1 to 1:3 by weight. Acceptable for contact with potable water.

CONSUMPTION INFORMATION

For the SEAL COAT™ system, corresponds 2, 4 or 12 Kg of emulsion for each bag. As a mortar plasticizer, it is usually used 3-8% by cement weight (1.5-4.0 Kg per 50 Kg cement bag).

CODIFICATION	COLOR	PACKAGING	PACKAGING INFO	PALLET
11.282071	White	Pail 4 Kg	56 Pails / Pallet	224 Kg
11.437150	White	Pail 12 Kg	40 Pails / Pallet	480 Kg



PENETRON® ACRYLIC BONDCRETE™

SHORT DESCRIPTION & APPLICATIONS

Acrylic based emulsion for enhancing the adhesion of mortars and concrete, used as admixture (dilution 1:1-1:2 with water) or as primer (undiluted). **Attention:** as bonding primer, the material must set well. Adhesion open time ~2 weeks. Used also as SEAL COAT™ System improvement component.

CONSUMPTION INFORMATION

As adhesion material between old and new mortar or concrete, the 3,8 L pail covers 18-22 m². **Attention:** good substrate preparation. As SEAL COAT™ adhesion enhancing admixture, it corresponds ~2 Kg per bag (the 3,8 L pail is ~4 Kg).

CODIFICATION	COLOR	PACKAGING	PACKAGING INFO	PALLET
10.11002	White	Pail 3,8 L	4 Pails / Box	100 Pails / ~ 400 Kg



PENETRON® WATERPLUG RAPID

SHORT DESCRIPTION & APPLICATIONS

Ready mixed, rapid-setting mortar, designed for quick repair work of concrete, subject to hydrostatic pressure, active leaks or underwater condition. Supports regular waterproofing systems such as SEAL COAT™ System. It requires very little water, when mixing. Form small quantities with putty like texture, always wearing rubber gloves.

CONSUMPTION INFORMATION

Indicatively, the consumption for void filling is ~1,5 Kg/L.

CODIFICATION	COLOR	PACKAGING	PACKAGING INFO	PALLET
10.30002	Grey	Pail 4.75 Kg	132 Pails / Pallet	627 Kg
10.20005	Grey	Pail 25 Kg	33 Pails / Pallet	825 Kg



PENETRON® MULTI PATCH

SHORT DESCRIPTION & APPLICATIONS

One component, non-sag cementitious mortar with synthetic fibers and special modified polymer additives for concrete repairs, stonewall joints, etc., up to 4-5 cm. Supports the repairing preparations of regular waterproofing systems such as SEAL COAT™ System. Mix 1 bag with only 3,1-3,7 Kg water.

CONSUMPTION INFORMATION

Indicatively, in repairs, the consumption for voids filling, is ~2,0 Kg/L, hence 1 bag fills voids of approx. 12,5 L.

CODIFICATION	COLOR	PACKAGING	PACKAGING INFO	PALLET
12.021-094	Grey	Bag 25 Kg	60 Bags / Pallet	1.500 Kg
12.021-371	White	Bag 25 Kg	60 Bags / Pallet	1.500 Kg



FIBERGLASS MESH

SHORT DESCRIPTION & APPLICATIONS

Fiberglass mesh 160 gr/m², grid 5,1x4,2 mm, for mortar reinforcement. Alkali resistant. Used as reinforcement in SEAL COAT™ waterproofing system, in repairing or decorative mortars (PENETRON® MULTI PATCH and PENETRON® TOP FINISH FINE or other equivalent), as well as coatings, plasterboard and cement board.

CONSUMPTION INFORMATION

Usually applied as a reinforcement layer, between layers of mortar. Roll 1x50 m = 50 m².

CODIFICATION	COLOR	PACKAGING	PACKAGING INFO	PALLET
18.10001	White	Roll 1x50 m	33 Rolls / Pallet	1.650 m ²

SEALING / INJECTION WATERPROOFING AND GROUTING SYSTEMS



PENETRON® INJECT Set (A+B)

SHORT DESCRIPTION & APPLICATIONS

New technology, two component integral crystalline waterproofing crack-injection-system. Application by cement-injection-pump. Suitable for permanent waterproofing and repairing concrete cracks in basements, tunnels, tanks, pools, bridges, sewage tanks, canals, construction joints etc. **Mixing:** In 9 or 10 L water add 2 or 1 L liquid FL (component B) and afterwards the powder P-25 Kg (component A) for respectively ~2 hours or up to 1 hour workability.

CONSUMPTION INFORMATION

The two mixing ratio respectively define large or small workability. Thus, 2 L liquid FL pail, can be used for 2 packages of 25 Kg powder P. For enhancing the fluidity we can add 0,5-1 L extra water. Thus, we achieve the sealing of even smaller cracks. Indicatively, each set seals 20 – 22 L of voids.

CODIFICATION	COLOR	PACKAGING	PACKAGING INFO	PALLET
10.21001	Grey	Component A Powder P 25 Kg Bag	33 sets of Pails / Pallet	~ 900 Kg
10.21002	Off Yellow	Component B Fluid FL 2 L Pail	33 sets of Pails / Pallet	~ 900 Kg



PENETRON® GROUT INJECT

SHORT DESCRIPTION & APPLICATIONS

Cement based grout, with high pumpability, grout sealer for concrete repairs (with grouting machine or casting), anchorages or fillings in masonry and other similar restorations. The very small particle size components in the product, allow the penetration of capillaries and cracks up to 0,4 mm, sealing and enhancing the strength of the repaired area.

CONSUMPTION INFORMATION

Indicative coverage of PENETRON® GROUT INJECT is approx. 18 - 20 L per 25 Kg bag.

CODIFICATION	COLOR	PACKAGING	PACKAGING INFO	PALLET
12.01001	Grey	Bag 25 Kg	60 Bags / Pallet	1.500 Kg



PENETRON® INJECTION FOAM (F) Set (A+B)

SHORT DESCRIPTION & APPLICATIONS

PENETRON® INJECTION FOAM (F) is a rapid, solvent free, water reactive polyurethane injection foam system. When PENETRON® INJECTION FOAM (F) reacts with water, it forms a dense, flexible, fine cellular foam to temporarily stop water leakage. PENETRON® INJECTION FOAM (F) can be used to seal cracks, voids and joints in concrete structures, as well as natural or artificial stone. For achieving permanent sealing, PENETRON® INJECTION FOAM (F) should be injected subsequently. For achieving permanent sealing, PENETRON® INJECTION RESIN (SR) should be used.

CONSUMPTION INFORMATION

Indicatively, 1 L of PENETRON® INJECTION FOAM (F) produces 15-20 times bigger foam (uncompressed).

CODIFICATION	COLOR	PACKAGING	PACKAGING INFO	PALLET
10.40100	Brown	Component A = 19 L	2 pails set (A+B) 19+3,80 = 22,80 L	-
10.40102	Transparent	Component B = 3,80 L	2 pails set (A+B) 19+3,80 = 22,80 L	-



PENETRON® INJECTION RESIN (SR) Set (A+B)

SHORT DESCRIPTION & APPLICATIONS

PENETRON® INJECTION RESIN (SR) is a 2-component, low viscous, elastic, phthalate and solvent-free injection resin system to seal moist and dry cracks permanently, making a watertight system. PENETRON® INJECTION RESIN (SR) can be directly used to permanently seal cracks, voids and joints in concrete structures, brickwork, natural and artificial stonework. If the structure has water leakage, it is recommended to inject, first with PENETRON® INJECTION FOAM (F), followed by PENETRON® INJECTION RESIN (SR), for a permanent watertight solution.

CONSUMPTION INFORMATION

Indicatively, for every 15 Kg PENETRON® INJECTION FOAM (F), 5 Kg of PENETRON® INJECTION RESIN (SR) are required.

CODIFICATION	COLOR	PACKAGING	PACKAGING INFO	PALLET
10.40200	Transparent	Component A = 19 L	2 pails set (A+B) 19+8 = 27 L	-
10.40202	Brown	Component B = 8 L	2 pails set (A+B) 19+8 = 27 L	-



PENETRON® PUMP FLUSH

SHORT DESCRIPTION & APPLICATIONS

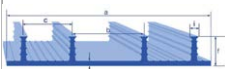
PENETRON® PUMP FLUSH is to be used as protection and for cleaning the equipment of PENETRON® INJECTION FOAM (F) and PENETRON® INJECTION RESIN. Also, can be used as general cleaner.

CONSUMPTION INFORMATION

PENETRON® PUMP FLUSH is used before and after the application of PENETRON® INJECTION (FOAM & RESIN). PENETRON® PUMP FLUSH works very well with polyurethane and epoxy based products.

CODIFICATION	COLOR	PACKAGING	PACKAGING INFO	PALLET
10.50100	Transparent	Pail 3.8 L	100 Pails / Pallet	~400 Kg

ELASTIC STRIP WATERSTOPS FOR CONCRETE JOINTS



P-WATERSTOPS FOR COLD JOINTS – EXTERNAL APPLICATION

SHORT DESCRIPTION & APPLICATIONS

PENETRON® WATERSTOP, from elastic PVC, for sealing cold joints, external application (CJE), for concrete structures. PENETRON® WATERSTOPS are tested according to BS 2571 (P300) or DIN 18541, part 1 – part 2 (P350). Typical application areas:

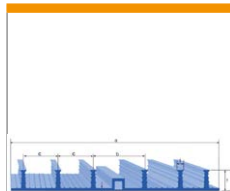
Tunnels, Dams, Underground Structures, Retaining Walls.

Also available in TPE upon request.

CONSUMPTION INFORMATION

Calculation in running meters.

CODIFICATION	COLOR	TYPE	LENGTH	ROLLS / PALLET
20.01500	Blue	P-WATERSTOP P300 CJE 250/20-4	15 m	10
20.02300	Blue	P-WATERSTOP P350 CJE 250/25-4	15 m	10
20.01100	Blue	P-WATERSTOP P350 CJE 320/25-6	10 m	8
20.02400	Blue	P-WATERSTOP P350 CJE 400/25-6	10 m	6
20.02000	Blue	P-WATERSTOP P350 CJE 500/25-6	10 m	4



P-WATERSTOPS FOR EXPANSION JOINTS – EXTERNAL APPLICATION

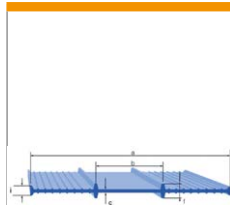
SHORT DESCRIPTION & APPLICATIONS

PENETRON® WATERSTOP, from elastic PVC, for sealing expansion joints, external application (EJE), for concrete structures. PENETRON® WATERSTOPS are tested according to BS 2571 (P300) or DIN 18541, part 1 – part 2 (P350). Typical application areas: Tunnels, Dams, Underground Structures, Retaining Walls. Also available in TPE upon request.

CONSUMPTION INFORMATION

Calculation in running meters.

CODIFICATION	COLOR	TYPE	LENGTH	ROLLS / PALLET
20.02500	Blue	P-WATERSTOP P300 EJE 250/20-4	15 m	10
20.01200	Blue	P-WATERSTOP P350 EJE 320/25-6	10 m	8
20.02600	Blue	P-WATERSTOP P350 EJE 400/25-6	10 m	4
20.02200	Blue	P-WATERSTOP P350 EJE 500/25-6	10 m	4



P-WATERSTOPS FOR COLD JOINTS – INTERNAL APPLICATION

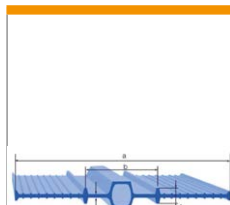
SHORT DESCRIPTION & APPLICATIONS

PENETRON® WATERSTOP, from elastic PVC, for sealing cold joints, internal application (CJI), for concrete structures. PENETRON® WATERSTOPS are tested according to BS 2571 (P300) or DIN 18541, part 1 – part 2 (P350). Typical application areas: Tunnels, Dams, Underground Structures, Retaining Walls. Also available in TPE upon request.

CONSUMPTION INFORMATION

Calculation in running meters.

CODIFICATION	COLOR	TYPE	LENGTH	ROLLS / PALLET
20.02700	Blue	P-WATERSTOP P300 CJI 150	25 m	18
20.01900	Blue	P-WATERSTOP P300 CJI 200	25 m	15
20.01700	Blue	P-WATERSTOP P300 CJI 240	25 m	15
20.01800	Blue	P-WATERSTOP P350 CJI 320	20 m	8
20.05000	Blue	P-WATERSTOP P350 CJI 400	10 m	4
20.02800	Blue	P-WATERSTOP P350 CJI 500	10 m	4



P-WATERSTOPS FOR EXPANSION JOINTS – INTERNAL APPLICATION

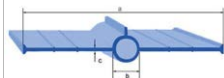
SHORT DESCRIPTION & APPLICATIONS

PENETRON® WATERSTOP, from elastic PVC, for sealing expansion joints, internal application (EJI), for concrete structures. PENETRON® WATERSTOPS are tested according to BS 2571 (P300) or DIN 18541, part 1 – part 2 (P350). Typical application areas: Tunnels, Dams, Underground Structures, Retaining Walls. Also available in TPE upon request.

CONSUMPTION INFORMATION

Calculation in running meters.

CODIFICATION	COLOR	TYPE	LENGTH	ROLLS / PALLET
20.02900	Blue	P-WATERSTOP P350 EJI 320	10 m	8
20.01300	Blue	P-WATERSTOP P350 EJI 400	10 m	4
20.03000	Blue	P-WATERSTOP P350 EJI 500	10 m	4



P-WATERSTOPS FOR EXPANSION JOINTS (LIGHT TYPE) – INTERNAL APPLICATION

SHORT DESCRIPTION & APPLICATIONS

PENETRON® WATERSTOP (light type), from elastic PVC, for sealing expansion joints, internal application (EJI), for concrete structures. PENETRON® WATERSTOPS are tested according to BS 2571 (P300) or DIN 18541, part 1 – part 2 (P350). Typical application areas: Tunnels, Dams, Underground Structures, Retaining Walls.

CONSUMPTION INFORMATION

Also available in TPE upon request.

CODIFICATION	COLOR	TYPE	LENGTH	ROLLS / PALLET
20.01600	Blue	P-WATERSTOP P300 EJI 250/25	15 m	15



P-WATERSTOP CORNER

SHORT DESCRIPTION & APPLICATIONS

Custom item, PENETRON® WATERSTOP, for corners, from elastic PVC.

CODIFICATION	COLOR	TYPE	LENGTH	PACKAGING
20.03200	Red	P350 250/30 500x500 mm	-	5 items
20.03300	Red	P350 320/25 500x500 mm	-	5 items



P-WATERSTOP "T"

SHORT DESCRIPTION & APPLICATIONS

Custom item, PENETRON® WATERSTOP, in "T" shape, from elastic PVC.

CODIFICATION	COLOR	TYPE	LENGTH	PACKAGING
20.03400	Red	P350 250/30 650x500 mm	-	5 items
20.03500	Red	P350 320/25 650x500 mm	-	5 items



P-WATERSTOP CROSS

SHORT DESCRIPTION & APPLICATIONS

Custom item, PENETRON® WATERSTOP, in cross shape, from elastic PVC.

CODIFICATION	COLOR	TYPE	LENGTH	PACKAGING
20.03600	Red	P350 250/30 650x650 mm	-	5 items
20.03700	Red	P350 320/25 650x650 mm	-	5 items



FIXING CLIPS

SHORT DESCRIPTION & APPLICATIONS

Custom item, for fixing PENETRON® WATERSTOP

CONSUMPTION INFORMATION

Calculation in running meters.

CODIFICATION	COLOR	TYPE	LENGTH	PACKAGING
20.03100	Red	P-Fixing Clips	-	250 items/bag



P-WELDING TOOL

SHORT DESCRIPTION & APPLICATIONS

Tool for welding PENETRON® WATERSTOP strips.

CODIFICATION	COLOR	TYPE	LENGTH	PACKAGING
20.02100	-	P-Welding Tool 350mm	350 mm	-

WATER EXPANDING SYSTEMS (STRIPS) FOR CONSTRUCTION JOINTS



PENEBAR® SW 45 RAPID TYPE A

SHORT DESCRIPTION & APPLICATIONS

Rapid expansion, water expanding sealing strip. For its placement, use the bonding primer PENEBAR® PRIMER.

Important: protect from water and rain, until concrete pouring.

Roll dimension: 19 mm x 25 mm x 5 m.

CONSUMPTION INFORMATION

Calculation in linear meters.

CODIFICATION	COLOR	PACKAGING	PACKAGING INFO	PALLET
10.10001	Black	Roll 5 m	6 Rolls / Box = 30 m	24 Boxes / ~490 Kg



PENEBAR® SW 45 RAPID TYPE B

SHORT DESCRIPTION & APPLICATIONS

Rapid expansion, water expanding sealing strip. For its placement, use the bonding primer PENEBAR® PRIMER.

Important: protect from water and rain, until concrete pouring.

Roll dimension: 9 mm x 25 mm x 4 m.

CONSUMPTION INFORMATION

Calculation in linear meters.

CODIFICATION	COLOR	PACKAGING	PACKAGING INFO	PALLET
10.10002	Black	Roll 4 m	6 Rolls / Box = 24 m	35 Boxes / ~335 Kg



PENEBAR® SW 55 TYPE A

SHORT DESCRIPTION & APPLICATIONS

Water expanding sealing strip of slow, controlled expansion. Suitable for application in humidity and rain conditions. For its placement, use the bonding primer PENEBAR® PRIMER or masonry nails in conditions of intense humidity. Roll dimension: 19 mm x 25 mm x 5 m.

CONSUMPTION INFORMATION

Calculation in linear meters.

CODIFICATION	COLOR	PACKAGING	PACKAGING INFO	PALLET
10.10003	Black	Roll 5 m	6 Rolls / Box = 30 m	24 Boxes / ~490 Kg



PENEBAR® SW 55 TYPE B

SHORT DESCRIPTION & APPLICATIONS

Water expanding sealing strip of slow, controlled expansion. Suitable for application in humidity and rain conditions. For its placement, use the bonding primer PENEBAR® PRIMER or masonry nails in conditions of intense humidity. Roll dimension: 9 mm x 25 mm x 4 m.

CONSUMPTION INFORMATION

Calculation in linear meters.

CODIFICATION	COLOR	PACKAGING	PACKAGING INFO	PALLET
10.10004	Black	Roll 4 m	6 Rolls / Box = 24 m	35 Boxes / ~335 Kg



PENEBAR® PRIMER

SHORT DESCRIPTION & APPLICATIONS

Water expanding strip primer. Stabilizes the substrate and prevents the humidity penetration to the PENEBAR® SW. **Important:** the material must be well set prior to PENEBAR® SW placement. In conditions of intense substrate humidity, use masonry nails.

CONSUMPTION INFORMATION

Indicatively: 1 L primer covers ~60 linear meters or correspondingly 0,75 L pail for 40 – 48 m and 3,80 L pail for 200 – 240 m.

CODIFICATION	COLOR	PACKAGING	PACKAGING INFO	PALLET
10.11005	Orange	Pail 0,75 L	16 Pails / Box	-
10.11001	Orange	Pail 3,80 L	4 Pails / Box	-

ENHANCING MORTAR ADMIXTURES / PRIMERS



PENETRON® LATEX

SHORT DESCRIPTION & APPLICATIONS

SBR, enhancing liquid admixture with 48.5% high concentration of solids for mortars and bonding coatings. Enhances the adhesion and provides flexibility, by reducing the absorbedness of concrete mixtures. Mixed in the mixing water.

CONSUMPTION INFORMATION

Indicatively, 5-10% by cement weight (2.5 – 5 Kg per 50 Kg cement bag) or in ratio from 1:1 to 1:4 with the mixing water depending on the use. E.g. for bonding layer (spatterdash) 1:2, for plasters 1:31:4, repairing mortars 1:2-1:3 with water.

CODIFICATION	COLOR	PACKAGING	PACKAGING INFO	PALLET
11.169241	White	Pail 5 Kg	56 Pails / Pallet	280 Kg
11.169240	White	Pail 20 Kg	30 Pails / Pallet	600 Kg
11.169242	White	Bulk 1.000 Kg	-	1.000 Kg



PENECRYL™ ELASTIC

SHORT DESCRIPTION & APPLICATIONS

Styrene / acrylic copolymer emulsion with 57% high concentration of solids, that provides elasticity in mortars. Component that improves the elasticity and the chemical resistance of PENETRON® SEAL COAT™. Applicable self same or after being mixed with water in ratio from 1:1 to 1:3 by weight. Acceptable for contact with potable water.

CONSUMPTION INFORMATION

For the SEAL COAT™ system, correspond 2, 4 or 12 Kg of emulsion for each bag. As a mortar plasticizer, it is usually used 3-8% by cement weight (1.5-4.0 Kg per 50 Kg cement bag).

CODIFICATION	COLOR	PACKAGING	PACKAGING INFO	PALLET
11.282071	White	Pail 4 Kg	56 Pails / Pallet	224 Kg
11.437150	White	Pail 12 Kg	40 Pails / Pallet	480 Kg



PENETRON® ACRYLIC BONDCRETE™

SHORT DESCRIPTION & APPLICATIONS

Acrylic based emulsion for enhancing the adhesion of mortars and concrete, used as admixture (dilution 1:1-1:2 with water) or as primer (undiluted). **Attention:** as bonding primer the material must set well. Adhesion open time ~2 weeks. Used also as SEAL COAT™ System improvement component.

CONSUMPTION INFORMATION

As adhesion material between old and new mortar or concrete, the 3,8 L pail covers 18-22 m². **Attention:** good substrate preparation. As SEAL COAT™ adhesion enhancing admixture, it corresponds ~2 Kg per bag (the 3,8 L pail is ~4 Kg).

CODIFICATION	COLOR	PACKAGING	PACKAGING INFO	PALLET
10.11002	White	Pail 3,8 L	4 Pails / Box	100 Pails / ~ 400 Kg



PRIMER STX 100™

SHORT DESCRIPTION & APPLICATIONS

Acrylic based primer to increase adhesion to absorbent and non-absorbent substrates. For absorbent substrates: Two coats, 1: 3 and 1: 1 water diluted, respectively. For normal substrates (eg. concrete): One coat, 1: 1 water diluted. For non-absorbent substrates (eg. tiles, metal, epoxy): One coat, insoluble. Each layer should have dried well. Open adhesion time ~ 24 hours. Suitable as a primer for self-leveling mortars, like INDUSTRIAL TOPPING SL, STANDARD UNDERLAYMENT SL etc.

CONSUMPTION INFORMATION

Indicatively: 18 - 22 m² per 3.8 L pail. Attention: good surface preparation.

CODIFICATION	COLOR	PACKAGING	PACKAGING INFO	PALLET
10.11006	Blue	Pail 3,8 L	4 Pails / Box	100 Pails / ~ 400 Kg

REPAIRING MORTARS WITH MODIFIED POLYMERS



PENETRON® V/O PATCH

SHORT DESCRIPTION & APPLICATIONS

One component, polymer modified, non sag, cementitious patch. Fast setting, good finishing for small thicknesses up to 50 mm per coat. Ideal for concrete vertical and overhead repairs. Mixing: 1 bag in 3,3-4,3 L water or 1 pail of 4,75 Kg in 0,6-0,8 L water (work in small quantities due to the restricted application time ~15 min). For the application of PENETRON® V/O PATCH as adhesion coat, more water is required in the mixing, in order to become a workable brushable slurry.

CONSUMPTION INFORMATION

Indicatively, 1 bag fills gaps around 12,7 L. For repairs, consumption for filling, is ~ 1,8 Kg/ t or 18 Kg/m² per 1 cm thickness. For application thicknesses of more than 5 cm, add ~ 7 Kg/bag quartz aggregates QUARTZ SAND MIX 3,0-6,0 MM or 1,5-8,0 MM, for filling volume ~ 16 L. The small container (4,75 Kg) covers a volume of about 2,70 L. As an adhesion layer, coated consumption is 1,5-2,0 Kg/m².

CODIFICATION	COLOR	PACKAGING	PACKAGING INFO	PALLET
10.30001	Grey	Pail 4,75 Kg	132 Pails / Pallet	627 Kg
10.20003	Grey	Bag 22,70 Kg	48 Bags / Pallet	1.089,60 Kg



PENETRON® ACRYLIC PATCH

SHORT DESCRIPTION & APPLICATIONS

One component, modified polymer, repairing mortar for applications requiring increased flexibility, good chemical resistance, finishing and relatively rapid strength increase. Ideal for repairs in concrete elements, stairs, parapets, pipes, balconies, ramps, floors etc. Mixing: 1 bag in 4,7-5,0 L water.

CONSUMPTION INFORMATION

1 bag fills ~12 L. The consumption, for voids filling, is ~1,9 Kg/L or 19 Kg/m² per 1 cm of repairs thickness. For thicknesses above 5 cm add up to 5,5 Kg/bag QUARTZ SAND MIX 3,0-6,0 MM or 1,5-8,0 MM (filling ~14,5 L).

CODIFICATION	COLOR	PACKAGING	PACKAGING INFO	PALLET
10.20004	Grey	Bag 22,70 Kg	48 Bags / Pallet	1.089,60 Kg



PENETRON® MULTI PATCH

SHORT DESCRIPTION & APPLICATIONS

One component, non-sag cementitious mortar with synthetic fibers and special modified polymer additives for concrete repairs, stonewall joints, etc. up to 4-5 cm. Supports the repairing preparations of regular waterproofing systems, such as SEAL COAT™ System. Mix 1 bag with only 3,1-3,7 Kg water.

CONSUMPTION INFORMATION

Indicatively, in repairs, the consumption, for voids filling, is ~2,0 Kg/L, hence 1 bag fills voids of approx. 12,5 L.

CODIFICATION	COLOR	PACKAGING	PACKAGING INFO	PALLET
12.021-094	Grey	Bag 25 Kg	60 Bags / Pallet	1.500 Kg
12.021-371	White	Bag 25 Kg	60 Bags / Pallet	1.500 Kg



PENETRON® CR-90

SHORT DESCRIPTION & APPLICATIONS

One component, polymer modified, new technology, repairing mortar for finishing from feather edge to a maximum thickness of 13 mm with reduced water absorbency. Suitable for vertical and horizontal concrete surfaces such as walls, facades, stairs, corridors, and passable floors or even in pools surrounding areas. Walkable in approx. 2-3 hours. Excellent adhesion even without the use of primer, in a well damp surface. Mixing: 22,70 Kg bag, in 3,8-5,2 L of water.

CONSUMPTION INFORMATION

Indicatively, the consumption per 1 mm repair thickness is ~1,6 Kg/m² hence the 22,70 Kg bag covers ~15 m² for 1 mm filling.

CODIFICATION	COLOR	PACKAGING	PACKAGING INFO	PALLET
10.20007	Grey	Bag 22,70 Kg	48 Bags / Pallet	1.089,60 Kg
10.20008	White	Bag 22,70 Kg	48 Bags / Pallet	1.089,60 Kg



PENETRON® GROUT

SHORT DESCRIPTION & APPLICATIONS

One component, controlled expansion, non corrosive, pourable, mortar for grouting, fillings and concrete repairs. Suitable for static repairs and industrial applications such as beams and machinery grouting etc. Wide fluidity range and very high strengths with stable expansion. Mixing: 1 bag in 3.6-4.8 L water.

CONSUMPTION INFORMATION

Indicatively, in repairs, 1 bag fills voids of approx. 11-11.8 L. For application thicknesses, above 7.5 cm or for total volume above 25 L, add up to 50% by weight QUARTZ SAND MIX 1.5-8.0 MM with correspondent increase of the filling volume.

CODIFICATION	COLOR	PACKAGING	PACKAGING INFO	PALLET
12.01000	Grey	Bag 25 Kg	60 Bags / Pallet	1.500 Kg



PENETRON® GROUT INJECT

SHORT DESCRIPTION & APPLICATIONS

Cement based grout, with high pumpability, grout sealer for concrete repairs (with grouting machine or casting), anchorages or fillings in masonry and other similar restorations. The very small particle size components in the product, allow the penetration of capillaries and cracks up to 0.4 mm, sealing and enhancing the strength of the repaired area.

CONSUMPTION INFORMATION

Indicative coverage of PENETRON® GROUT INJECT is approx. 18 - 20 L per 25 Kg bag.

CODIFICATION	COLOR	PACKAGING	PACKAGING INFO	PALLET
12.01001	Grey	Bag 25 Kg	60 Bags / Pallet	1.500 Kg



PENETRON[®] GROUT FLOOR

SHORT DESCRIPTION & APPLICATIONS

One component, cement based, pourable leveling mortar, high strength, for filling floors with mechanical stress. Compatible with the respective adhesion primers, depending on the absorpency of the substrate.

CONSUMPTION INFORMATION

Indicatively, consumption varies between 1,9 - 2,0 Kg/m²/mm thickness. Applied in thicknesses between 6 mm to 30 mm, without adding aggregates.

CODIFICATION	COLOR	PACKAGING	PACKAGING INFO	PALLET
12.021-342	Grey	Bag 25 Kg	60 Bags / Pallet	1.500 Kg



PENETRON[®] QUICK PATCH

SHORT DESCRIPTION & APPLICATIONS

One component, polymer modified, grout mortar, with very high strength, for quick repair of industrial concrete floors. For light loads (cars), patch thickness application is between 12 mm to 50 mm, without adding quartz sand. For heavy loads (trucks), patch thickness must be above 50 mm, with the addition of QUARTZ SAND MIX (≈11,3 Kg/Bag). Mixing: 1 bag with 3,1 L water.

CONSUMPTION INFORMATION

Indicatively, the consumption (without the addition of quartz sand) is: ~1,9 Kg/m² per 1 mm thickness or 1 bag for filling 12 L. With the addition of quartz sand the product's consumption decreases correspondingly.

CODIFICATION	COLOR	PACKAGING	PACKAGING INFO	PALLET
10.20006	Grey	Bag 22,70 Kg	48 Bags / Pallet	1.089,60 Kg

QUARTZ SAND FOR MORTARS, EPOXY AND POLYURETHANE PRODUCTS



QUARTZ POWDER

SHORT DESCRIPTION & APPLICATIONS

Quartz powder for mixing with pour-able epoxy. Mixing with epoxy primers (PENEPOX[™] SF PRIMER) for thin substrates putty.

CONSUMPTION INFORMATION

As thin putty 0,5 – 1 Kg/m² powder with proportionate epoxy material.

CODIFICATION	COLOR	PACKAGING	PACKAGING INFO	PALLET
12.020-009	Light Grey	Bag 25 Kg	56 Bags / Pallet	1.400 Kg



QUARTZ SAND MIX 0,060-0,180 MM

SHORT DESCRIPTION & APPLICATIONS

Special quartz sand mix for mixing with pour-able flooring epoxies (PENEPOX[™] CS) – contains powder grains (light-colored).

CONSUMPTION INFORMATION

Indicatively, up to 1:1 by weight with pour-able flooring epoxies.

CODIFICATION	COLOR	PACKAGING	PACKAGING INFO	PALLET
12.021-075	Off-white	Bag 25 Kg	64 Bags / Pallet	1.600 Kg



QUARTZ SAND MIX 0,10-0,45 MM

SHORT DESCRIPTION & APPLICATIONS

Special quartz sand mix for mixing with pour-able flooring epoxies (PENEPOX™ CS). Also suitable as medium grain dispersion material (light-colored).

CONSUMPTION INFORMATION

Indicatively, up to 1:1 by weight with pour-able flooring epoxies. As dispersion material 1 – 3 Kg/m².

CODIFICATION	COLOR	PACKAGING	PACKAGING INFO	PALLET
12.021-300	Off-white	Bag 25 Kg	64 Bags / Pallet	1.600 Kg



QUARTZ SAND MIX 0,1-0,6 MM

SHORT DESCRIPTION & APPLICATIONS

Special quartz sand mix for mixing with pour-able flooring epoxies (PENEPOX™ CS). Also suitable as medium grain dispersion material or for the production of resin mortars (light-colored).

CONSUMPTION INFORMATION

Indicatively, up to 1:1 by weight with pour-able flooring epoxies. As dispersion material 1 – 3 Kg/m².

CODIFICATION	COLOR	PACKAGING	PACKAGING INFO	PALLET
12.021-053	Off-white	Bag 40 Kg	40 Bags / Pallet	1.600 Kg



QUARTZ SAND MIX 0,4-0,8 MM

SHORT DESCRIPTION & APPLICATIONS

Quartz sand mix for thick grain dispersion. Also used for resin mortars.

CONSUMPTION INFORMATION

As dispersion material 1 – 3 Kg/m².

CODIFICATION	COLOR	PACKAGING	PACKAGING INFO	PALLET
12.021-006	Beige-Brown	Bag 25 Kg	60 Bags / Pallet	1.500 Kg
12.021-257	Off-white	Bag 25 Kg	60 Bags / Pallet	1.500 Kg



QUARTZ SAND MIX 3,0-6,0 MM

SHORT DESCRIPTION & APPLICATIONS

Special quartz sand mix, for mixing with mortars such as PENETRON® GROUT etc.

CONSUMPTION INFORMATION

According to each mortar's indications.

CODIFICATION	COLOR	ΣΥΣΚΕΥΑΣΙΑ	ΠΛΗΡΟΦ. ΣΥΣΚΕΥΑΣΙΑΣ	ΠΑΛΕΤΑ
12.10022.15	Light Grey	Bag 25 Kg	60 Bags / Pallet	1.500 Kg



QUARTZ SAND MIX 1,5-8,0 MM

SHORT DESCRIPTION & APPLICATIONS

Special quartz sand mix for mixing with mortars such as PENETRON[®] GROUT etc.

CONSUMPTION INFORMATION

According to each mortar's indications.

CODIFICATION	COLOR	PACKAGING	PACKAGING INFO	PALLET
12.10022.14	Light Grey	Bag 25 Kg	60 Bags / Pallet	1.500 Kg



QUARTZ SAND INDUSTRIAL

SHORT DESCRIPTION & APPLICATIONS

Special quartz sand mix for dry-shake use as hardener for industrial floors. Approximate mixing with cement 1: 1.

CONSUMPTION INFORMATION

Approximate cement mixture consumption as dry-shake 2 - 4 Kg/m².

CODIFICATION	COLOR	PACKAGING	PACKAGING INFO	PALLET
12.00022.26	Off-white	Bag 25 Kg	64 Bags / Pallet	1.600 Kg

SiMP[®] AND POLYURETHANE BASED ELASTIC LIQUID WATERPROOFING SYSTEMS



SiMP[®] COAT 25

SHORT DESCRIPTION & APPLICATIONS

Premium, environmental and user friendly, one component, Silyl-Terminated Polymer (SiMP[®] Technology), elastic, waterproofing membrane, free of bitumen, solvent and isocyanates. No primer for bonding is needed, when applied on stable surfaces. Applicable on damp substrates. Suitable for surfaces that will be covered. Easy packaging, 14 Kg pail, including 2 aluminum bags of 7 Kg.

CONSUMPTION INFORMATION

Indicatively, 1,3-1,5 Kg/m² in 2 layers. The use of FABRIC is expected to double the coverage of SiMP[®] COAT 25 per m².

CODIFICATION	COLOR	PACKAGING	PACKAGING INFO	PALLET
16.13003	Light Grey	Pail 1 Kg	12 Pails / Box	-
16.13002	Light Grey	Pail 7 Kg (1 X 7 Kg aluminum bag)	80 Pails / Pallet	560 Kg
16.13001	Light Grey	Pail 14 Kg (2x7 Kg aluminum bags)	44 Pails / Pallet	616 Kg



PENECOAT™ ELASTIC

SHORT DESCRIPTION & APPLICATIONS

One component, highly elastic, polyurethane waterproofing coating for terraces, balconies etc. Good resistance to UV and external conditions. Crack bridging up to 2 mm. Maintains basic properties from -30°C to +90°C. Small dilution (4-8%), where needed, with PENELEANER™ A PLUS, for application by brush or up to 15% for application with airless.

CONSUMPTION INFORMATION

Indicatively, for two layers, the total consumption is 1,2-1,5 Kg/m². In case of reinforcement with FABRIC, the consumption doubles. Indicatively, at least 2,5 Kg/m² total consumption.

CODIFICATION	COLOR	PACKAGING	PACKAGING INFO	PALLET
14.026-17-01	White	Pail 1 Kg	16 Pails / Box	-
14.026-15-01	Grey	Pail 1 Kg	16 Pails / Box	-
14.026-16-01	Red	Pail 1 Kg	16 Pails / Box	-
14.026-17-06	White	Pail 6 Kg	4 Pails / Box	-
14.026-15-06	Grey	Pail 6 Kg	4 Pails / Box	-
14.026-16-06	Red	Pail 6 Kg	4 Pails / Box	-
14.026-17-25	White	Pail 25 Kg	33 Pails / Pallet	825 Kg
14.026-15-25	Grey	Pail 25 Kg	33 Pails / Pallet	825 Kg
14.026-16-25	Red	Pail 25 Kg	33 Pails / Pallet	825 Kg



PENECOAT™ ELASTIC PROFESSIONAL

SHORT DESCRIPTION & APPLICATIONS

One component, economic, elastic, polyurethane waterproofing coating for terraces, balconies etc. and generally, for surfaces that are going to be covered. Maintains basic properties, on big temperature range. Small dilution (4-8%), where needed, with PENELEANER™ A PLUS, for application by brush or up to 15% for application with airless.

CONSUMPTION INFORMATION

Indicatively, for 2 layers, the total consumption is 1,3-1,5 Kg/m². In case of reinforcement with FABRIC, the consumption doubles. Indicatively, at least 2,5 Kg/m² total consumption.

CODIFICATION	COLOR	PACKAGING	PACKAGING INFO	PALLET
14.026-20-06	White	Pail 6 Kg	4 Pails / Box	-
14.026-20-25	White	Pail 25 Kg	33 Pails / Pallet	825 Kg



PENECOAT™ HYPER ELASTIC BLACK Set (A+B)

SHORT DESCRIPTION & APPLICATIONS

Bitumen-rubber and polyurethane mixture membrane, 2-component, with very high elasticity, for surfaces to be covered. For waterproofing roofs, walls with positive pressure, under tiles, bathrooms, asphalt, bitumen membranes, EDPM membranes, etc. It offers excellent crack bridging, easy mixing ratio, maintaining the basic properties at temperatures between -30°C to +90°C and presents resistance in acidic and alkaline solutions.

CONSUMPTION INFORMATION

The coverage of PENECOAT™ HYPER ELASTIC BLACK is at least 1.0-1.5 L/m², when applied to one or two coats. In case of geotextile FABRIC reinforcing application, consumption doubles.

CODIFICATION	COLOR	PACKAGING	PACKAGING INFO	PALLET
14.026-12-05	Black	Component A=5 L (4,9 Kg)	2 pails set (A+B) 5+5 = 10 L	-
14.026-13-05	Black	Component B=5 L (5,1 Kg)	2 pails set (A+B) 5+5 = 10 L	-
14.026-12-20	Black	Component A=20 L (19,8 Kg)	2 pails set (A+B) 20+20 = 40 L	-
14.026-13-20	Black	Component B=20 L (20,5 Kg)	2 pails set (A+B) 20+20 = 40 L	-



PENECOAT™ CLEAR

SHORT DESCRIPTION & APPLICATIONS

One component, transparent system of aliphatic, semi-elastic PU-COATING with high UV resistance for waterproofing surfaces from tile, stone, wood etc. in terraces, balconies and others.

CONSUMPTION INFORMATION

Indicatively, for 2 coats, the total consumption is 0,600-0,700 Kg/m². The second coat is applied in the next day. As a topping finishing varnish, diluted with PENECLANER™ A PLUS, consumption is 60-100 gr material/m², per layer.

CODIFICATION	COLOR	PACKAGING	PACKAGING INFO	PALLET
14.013-02-01	Transparent	Pail 1 Kg	12 Pails / Box	-
14.013-02-05	Transparent	Pail 5 Kg	4 Pails / Box	-
14.013-02-10	Transparent	Pail 10 Kg	-	-
14.013-02-20	Transparent	Pail 20 Kg	33 Pails / Pallet	660 Kg

POLYURETHANE BASED PROTECTION COATINGS / PRIMERS



PENEPOX™ W Set (A+B)

SHORT DESCRIPTION & APPLICATIONS

Transparent, 2-component, epoxy, water based primer for PENECOAT™ ELASTIC on non porous surfaces such as metals, tiles, old acrylics, bitumen etc. The mixture is diluted with water 10-20%. Also with dilution up to 50% with water it can be used as a very strong stabilizer of unstable substrates. The waiting time, as primer, is 4-12 hours, depending on the conditions (slow down during winter time).

CONSUMPTION INFORMATION

Indicatively, the consumption is 0,150 to 0,200 Kg/m² in one coat and depending on the substrate absorbedness. As stabilizer for unstable substrates, it may increase its consumption.

CODIFICATION	COLOR	PACKAGING	PACKAGING INFO	PALLET
14.026-01-03	Transparent	Component A=3 Kg	2 pails set (A+B) 3+1 = 4 Kg	-
14.026-02-01	Transparent	Component B=1 Kg	2 pails set (A+B) 3+1 = 4 Kg	-
14.026-01-15	Transparent	Component A=15 Kg	2 pails set (A+B) 15+5 = 20 Kg	-
14.026-02-05	Transparent	Component B=5 Kg	2 pails set (A+B) 15+5 = 20 Kg	-



PENEPRIMER™ PU

SHORT DESCRIPTION & APPLICATIONS

One component, transparent, polyurethane, stabilizing primer for porous surfaces of concrete, mortars, etc. Suitable for the preparation of polyurethane coatings such as PENECOAT™ ELASTIC, PENECOAT™ PU-H and PENEFLOR™ PU-COAT. The waiting time, as primer, is 2-3 hours depending the conditions.

CONSUMPTION INFORMATION

Indicatively, the consumption is 0,200 to 0,250 Kg/m² in one coat, depending on the absorbedness of the substrate.

CODIFICATION	COLOR	PACKAGING	PACKAGING INFO	PALLET
14.026-43-01	Transparent	Pail 1 Kg	12 Pails / Box	-
14.026-43-05	Transparent	Pail 5 Kg	4 Pails / Box	-
14.026-43-10	Transparent	Pail 10 Kg	-	-
14.026-43-17	Transparent	Pail 17 Kg	-	-



PENECOAT™ PU-L

SHORT DESCRIPTION & APPLICATIONS

One component, aliphatic PU, elastic coating with high UV resistance. Protection from weather conditions and chemical attack for the polyurethane coatings PENECOAT™ ELASTIC, even with previous medium quartz sand dispersion, waterproofing bitumen membranes or thermo insulating polyurethane foam. For medium traffic areas.

CONSUMPTION INFORMATION

Indicatively, the consumption is ~0,150 Kg/m² per coat. Applicable in 1-2 coats within 3-4 hours and while the surface is still sticky.

CODIFICATION	COLOR	PACKAGING	PACKAGING INFO	PALLET
14.026-31-01	White	Pail 1 Kg	12 Pails / Box	-
14.026-31-05	White	Pail 5 Kg	4 Pails / Box	-
14.026-27-05	Grey	Pail 5 Kg	4 Pails / Box	-
14.026-26-05	Red	Pail 5 Kg	4 Pails / Box	-
14.026-24-05	Green	Pail 5 Kg	4 Pails / Box	-
14.026-31-10	White	Pail 10 Kg	-	-
14.026-27-10	Grey	Pail 10 Kg	-	-
14.026-26-10	Red	Pail 10 Kg	-	-
14.026-24-10	Green	Pail 10 Kg	-	-
14.026-21-20	White	Pail 20 Kg	-	-



PENECOAT™ PU-H

SHORT DESCRIPTION & APPLICATIONS

One component, aliphatic PU, semi-elastic coating with high UV resistance for use in floorings or as protection for the polyurethane coatings PENECOAT™ ELASTIC that have been fully covered with quartz sand dispersion. Protection from weather conditions and chemical attack. Use in floorings with medium traffic (commercial areas, parking, small industries, oil mills, cooling chambers). Pre-coating of porous flooring (2-3 hours before) with PENEPRIMER™ PU and non porous (usually the previous day) with PENEPOX™ W.

CONSUMPTION INFORMATION

Indicatively, the consumption is ~0,200 Kg/m² per coat. Usually applicable in 2 coats within 2-3 hours and while the surface is still sticky. In the case of application with the primer PENEPRIMER™ PU and 2 coats of PENECOAT™ PU-H we must finish in the same day.

CODIFICATION	COLOR	PACKAGING	PACKAGING INFO	PALLET
14.026-40-05	White	Pail 5 Kg	4 Pails / Box	-
14.026-37-05	Grey	Pail 5 Kg	4 Pails / Box	-
14.026-39-05	Red	Pail 5 Kg	4 Pails / Box	-
14.026-40-10	White	Pail 10 Kg	-	-
14.026-38-10	Pubble Grey	Pail 10 Kg	-	-
14.026-39-10	Red	Pail 10 Kg	-	-
14.007-56-10	Yellow	Pail 10 Kg	-	-
14.026-40-20	White	Pail 20 Kg	33 Pails / Pallet	660 Kg
14.026-37-20	Grey	Pail 20 Kg	33 Pails / Pallet	660 Kg
14.026-39-20	Red	Pail 20 Kg	33 Pails / Pallet	660 Kg
14.026-50-20	Green	Pail 20 Kg	33 Pails / Pallet	660 Kg



PENECOAT™ CLEAR TILE PRIMER

SHORT DESCRIPTION & APPLICATIONS

One component primer for PENECOAT™ CLEAR, in non absorbent surfaces, such as tiles and glass. Applicable with cloth (like floor polish) 1-2 hours before the coating.

CONSUMPTION INFORMATION

Indicatively, 10-16 m²/L per coat.

CODIFICATION	COLOR	PACKAGING	PACKAGING INFO	PALLET
14.013-01-L01	Transparent	Pail 1 L	12 Pails / Box	-
14.013-01-L05	Transparent	Pail 5 L	4 Pails / Box	-



PENECOAT™ CLEAR MAT FINISH

SHORT DESCRIPTION & APPLICATIONS

One component coating for mat finishing in PENECOAT™ CLEAR. Important: good stirring before use.

CONSUMPTION INFORMATION

Indicatively, the consumption is ~0,100 Kg/m² in one coat.

CODIFICATION	COLOR	PACKAGING	PACKAGING INFO	PALLET
14.013-03-01	Transparent	Pail 1 Kg	16 Pails / Box	-
14.013-03-04	Transparent	Pail 4 Kg	4 Pails / Box	-
14.013-03-10	Transparent	Pail 10 Kg	-	-

SOLVENTS AND REINFORCEMENT FOR SIMP® AND POLYURETHANE BASED WATERPROOFING SYSTEMS



PENECLEANER™ A PLUS

SHORT DESCRIPTION & APPLICATIONS

Strong solvent and cleaner for polyurethane and epoxy materials, such as the PENEPOX™, PENECOAT™ ELASTIC, PENECOAT™ CLEAR, polyurethane sealers, etc.

CONSUMPTION INFORMATION

Indicatively, 4-8% by weight of the polyurethane materials, or up to 15% for airless application.
Density: ~0,9 Kg/L

CODIFICATION	COLOR	PACKAGING	PACKAGING INFO	PALLET
14.009-01-L01	Transparent	Pail 1 L	12 Pails / Box	-
14.009-01-L05	Transparent	Pail 5 L	4 Pails / Box	-
14.009-01-L20	Transparent	Pail 20 L	33 Pails / Box	660 L / ~594 Kg



FABRIC

SHORT DESCRIPTION & APPLICATIONS

Special reinforcement from non-woven elastic geo-textile of 60 gr/m² for the reinforcement of PENECONAT™ polyurethane systems.

CONSUMPTION INFORMATION

Increase ~10% of the surface due to the covering.

CODIFICATION	COLOR	PACKAGING	PACKAGING INFO	PALLET
14.026-10-20	White	Roll 20 m ²	Roll 0,20 mx100 m = 20 m ²	-
14.026-10-10	White	Roll 100 m ²	Roll 1 mx100 m = 100 m ²	-

TANKS' POLYURETHANE BASED WATERPROOFING PRODUCTS / PRIMERS AND POOL COATINGS



PENECOAT™ SF ELASTIC Set (A+B)

SHORT DESCRIPTION & APPLICATIONS

Solvent free, 2-component, elastic, coating, polyurethane waterproofing material. Suitable for tanks, canals, potable water, substrate in bathrooms etc. High chemical resistance. Possible fading, if exposed in sun.

CONSUMPTION INFORMATION

Indicatively, for 2 coats the total consumption is 1-1,2 Kg/m². In the case of reinforcement with intermediate FABRIC, the consumption is doubled.

CODIFICATION	COLOR	PACKAGING	PACKAGING INFO	PALLET
14.026-52-06	Off-white	Component A=6 Kg	2 pails set (A+B) 6+1 = 7 Kg	-
14.026-53-01	Off-white	Component B=1 Kg	2 pails set (A+B) 6+1 = 7 Kg	-



PENEPOX™ SF PRIMER Set (A+B)

SHORT DESCRIPTION & APPLICATIONS

Solvent free, 2-component, epoxy primer, with high mechanical and chemical properties. Primer for the PENECONAT™ SF ELASTIC system, but also for the PENEPOX™ flooring and coatings epoxies. As coating, it hardens and stabilizes surfaces. Can be combined with quartz sand in internal flooring applications.

CONSUMPTION INFORMATION

Indicatively, the consumption is 0,250 Kg/m² for one coat and depending the substrates absorbedness. The quartz sand combination increases consumption.

CODIFICATION	COLOR	PACKAGING	PACKAGING INFO	PALLET
14.026-44-04	Transparent	Component A=4 Kg	2 pails set (A+B) 4+2 = 6 Kg	-
14.026-45-02	Transparent	Component B=2 Kg	2 pails set (A+B) 4+2 = 6 Kg	-
14.026-44-08	Transparent	Component A=8 Kg	2 pails set (A+B) 8+4 = 12 Kg	-
14.026-45-04	Transparent	Component B=4 Kg	2 pails set (A+B) 8+4 = 12 Kg	-



PENECOAT™ POOL

SHORT DESCRIPTION & APPLICATIONS

One component, colored, flexible, polyurethane based pool coating. UV and pool chemicals resistance. Attention: older coatings must be removed in great extent.

CONSUMPTION INFORMATION

Indicatively, 0,400 – 0,500 Kg/m² in 2-3 coats and depending on the substrates absorbdness.

CODIFICATION	COLOR	PACKAGING	PACKAGING INFO	PALLET
14.014-00-05	Light Blue	Pail 5 Kg	4 Pails / Box	-
14.014-04-05	Blue	Pail 5 Kg	4 Pails / Box	-
14.014-01-05	Off-white	Pail 5 Kg	4 Pails / Box	-
14.014-02-05	Beige/Sand	Pail 5 Kg	4 Pails / Box	-
14.014-00-10	Light Blue	Pail 10 Kg	-	-
14.014-04-10	Blue	Pail 10 Kg	-	-
14.014-01-10	Off-white	Pail 10 Kg	-	-
14.014-02-10	Beige/Sand	Pail 10 Kg	-	-
14.014-04-20	Blue	Pail 20 Kg	-	-

EPOXY AND POLYURETHANE FLOORING SYSTEMS / PROTECTIVE PAINTS

EPOXY / POLYURETHANE PRIMERS



PENEPOX™ W Set (A+B)

SHORT DESCRIPTION & APPLICATIONS

Transparent, 2-component, epoxy water based primer for PENECOAT™ ELASTIC on non porous surfaces such as metals, tiles, old acrylics, bitumen etc. The mixture is diluted with water 10-20%. Also with dilution up to 50% with water it can be used as a very strong stabilizer of unstable substrates. The waiting time, as primer, is 4-12 hours, depending on the conditions (slow down during winter time).

CONSUMPTION INFORMATION

Indicatively, the consumption is 0,150 to 0,200 Kg/m² in one coat and depending on the substrate absorbdness. As stabilizer for unstable substrates, it may increase its consumption.

CODIFICATION	COLOR	PACKAGING	PACKAGING INFO	PALLET
14.026-01-03	Transparent	Component A=3 Kg	2 pails set (A+B) 3+1 = 4 Kg	-
14.026-02-01	Transparent	Component B=1 Kg	2 pails set (A+B) 3+1 = 4 Kg	-
14.026-01-15	Transparent	Component A=15 Kg	2 pails set (A+B) 15+5 = 20 Kg	-
14.026-02-05	Transparent	Component B=5 Kg	2 pails set (A+B) 15+5 = 20 Kg	-



PENEPOX[™] SF PRIMER Set (A+B)

SHORT DESCRIPTION & APPLICATIONS

Solvent free, 2-component, epoxy primer with high mechanical and chemical properties. Primer for the PENEPOX[™] SF ELASTIC system, but also for the PENEPOX[™] flooring and coatings epoxies. As coating, it hardens and stabilizes surfaces. Can be combined with quartz sand in internal flooring applications.

CONSUMPTION INFORMATION

Indicatively, the consumption is 0,250 Kg/m² for one coat and depending the substrates absorbedness. The quartz sand combination increases consumption.

CODIFICATION	COLOR	PACKAGING	PACKAGING INFO	PALLET
14.026-44-04	Transparent	Component A=4 Kg	2 pails set (A+B) 4+2 = 6 Kg	-
14.026-45-02	Transparent	Component B=2 Kg	2 pails set (A+B) 4+2 = 6 Kg	-
14.026-44-08	Transparent	Component A=8 Kg	2 pails set (A+B) 8+4 = 12 Kg	-
14.026-45-04	Transparent	Component B=4 Kg	2 pails set (A+B) 8+4 = 12 Kg	-



EP 28*

SHORT DESCRIPTION & APPLICATIONS

Epoxy based, 2-component, economic, resin primer, with very low viscosity, solvent-free, for general purpose. It is applied as a primer, before the application of epoxy products, as well as scratch coat. Also, it can be used for repairs and levelling purposes. For better adhesion between layers, dry-shake application of QUARTZ SAND MIX 0,4-0,8 MM is suggested.

* EP 5530 could be alternatively used instead of EP 28.

CONSUMPTION INFORMATION

Indicatively, the consumption is 0,3-0,4 Kg/m² for application as a primer, 0,4-0,6 Kg/m² for scratch coat and 0,150-0,300 Kg/m²/mm of thickness layer for application as a mortar.

CODIFICATION	COLOR	PACKAGING	PACKAGING INFO	PALLET
19.03100	Colorless	Component A=6,8 Kg	2 pails set (A+B) 6,8+3,2 = 10 Kg	300 Kg
19.03101	Yellowish	Component B=3,2 Kg	2 pails set (A+B) 6,8+3,2 = 10 Kg	300 Kg
19.03003	Colorless	Component A=20,4 Kg	2 pails set (A+B) 20,4+9,6 = 30 Kg	540 Kg
19.03004	Yellowish	Component B=9,6 Kg	2 pails set (A+B) 20,4+9,6 = 30 Kg	540 Kg



EP 5530

SHORT DESCRIPTION & APPLICATIONS

Epoxy based, 2-component, resin primer, solvent-free. It is applied as a primer, before the application of epoxy products, as well as scratch coat. Also, it can be used for repairs and levelling purposes. For better adhesion between layers, dry-shake application of QUARTZ SAND MIX 0,4-0,8 MM is suggested.

CONSUMPTION INFORMATION

Indicatively, the consumption is 0,3-0,4 Kg/m² for application as a primer, 0,4-0,6 Kg/m² for scratch coat and 0,150-0,300 Kg/m²/mm of thickness layer for application as a mortar.

CODIFICATION	COLOR	PACKAGING	PACKAGING INFO	PALLET
19.23100	Colorless	Component A=25,0 Kg	2 pails set (A+B) 25,0+5,0 = 30 Kg	540 Kg
19.23101	Yellowish	Component B=5,0 Kg	2 pails set (A+B) 25,0+5,0 = 30 Kg	540 Kg



EP 50

SHORT DESCRIPTION & APPLICATIONS

High quality, epoxy based, 2-component, resin primer, low-viscosity, solvent-free. It is applied as a primer, before the application of epoxy products, as well as scratch coat. For better adhesion between layers, dry-shake application of QUARTZ SAND MIX 0,4-0,8 MM is suggested. Compatible for ESD Flooring System.

CONSUMPTION INFORMATION

Indicatively, the consumption is 0,3-0,4 Kg/m² for application as a primer and 0,4-0,6 Kg/m² for scratch coat.

CODIFICATION	COLOR	PACKAGING	PACKAGING INFO	PALLET
19.16200	Colorless	Component A=6,6 Kg	2 pails set (A+B) 6,6+3,4 = 10 Kg	300 Kg
19.16201	Yellowish	Component B=3,4 Kg	2 pails set (A+B) 6,6+3,4 = 10 Kg	300 Kg
19.16100	Colorless	Component A=20 Kg	2 pails set (A+B) 20+10 = 30 Kg	540 Kg
19.16101	Yellowish	Component B=10 Kg	2 pails set (A+B) 20+10 = 30 Kg	540 Kg



EP 51 RAPID S

**NEW
PRODUCT**

SHORT DESCRIPTION & APPLICATIONS

Rapid setting, epoxy based, 2-component, resin primer, solvent-free. Suitable for difficult substrates. It is applied as a primer, before the application of epoxy products, as scratch coat, as well as stabilizing weak substrates.

CONSUMPTION INFORMATION

Indicatively, the consumption is 0,3-0,4 Kg/m² for application as a primer and 0,4-0,6 Kg/m² for scratch coat.

CODIFICATION	COLOR	PACKAGING	PACKAGING INFO	PALLET
19.16300	Colorless	Component A=7,1 Kg	2 pails set (A+B) 7,1+2,9 = 10 Kg	300 Kg
19.16301	Yellowish	Component B=2,9 Kg	2 pails set (A+B) 7,1+2,9 = 10 Kg	300 Kg
-	Colorless	Component A=21,3 Kg	2 pails set (A+B) 21,3+8,7 = 30 Kg	540 Kg
-	Yellowish	Component B=8,7 Kg	2 pails set (A+B) 21,3+8,7 = 30 Kg	540 Kg



EP 52 RAPID

SHORT DESCRIPTION & APPLICATIONS

Rapid setting, epoxy based, 2-component, resin primer, solvent-free. Suitable for difficult substrates, with high moisture content. It is applied as a primer, before the application of epoxy products, as scratch coat, as well as stabilizing weak substrates.

CONSUMPTION INFORMATION

Indicatively, the consumption is 0,3-0,4 Kg/m² for application as a primer and 0,4-0,6 Kg/m² for scratch coat.

CODIFICATION	COLOR	PACKAGING	PACKAGING INFO	PALLET
19.11100	Colorless	Component A=6,6 Kg	2 pails set (A+B) 6,6+3,4 = 10 Kg	300 Kg
19.11001	Yellowish	Component B=3,4 Kg	2 pails set (A+B) 6,6+3,4 = 10 Kg	300 Kg
19.11200	Colorless	Component A=20,0 Kg	2 pails set (A+B) 20+10 = 30 Kg	540 Kg
19.11201	Yellowish	Component B=10,0 Kg	2 pails set (A+B) 20+10 = 30 Kg	540 Kg



VB 225[™] Set (A+B)

SHORT DESCRIPTION & APPLICATIONS

One-coat moisture vapor reduction system, 2-component, consisting of a unique combination of epoxy resins and other chemical compounds. VB 225 is formulated to prevent floor failures on concrete slabs, containing elevated levels of moisture vapor emission (100% RH). The low perm rating makes VB 225 perfect as a primer for virtually all types of flooring, especially low permeance flooring, such as sheet goods and rubber tile and, due to its low VOC content, allows installation in sensitive areas, such as active hospitals, schools and grocery stores.

CONSUMPTION INFORMATION

Fast-curing within 8-12 hours. Coverage, based on the moisture content of the substrate, from 85% to 100% RH, respectively, 3,70-2,45 m² / L (25 - 40 m² per set ~ 10 L).

CODIFICATION	COLOR	PACKAGING	PACKAGING INFO	PALLET
10.12003	Transparent	Component A=5,87 L Component B=3,80 L	2 pails set (A+B) 5,87+3,80 = 9,67 L	-



PENEPRIMER[™] PU

SHORT DESCRIPTION & APPLICATIONS

One component, transparent, polyurethane, stabilizing primer for porous surfaces of concrete, mortars, etc. Suitable for the preparation of polyurethane coatings, such as PENEcoat[™] ELASTIC, PENEcoat[™] PU-H and PENEfloor[™] PU-COAT. The waiting time, as primer, is 2-3 hours, depending on the conditions.

CONSUMPTION INFORMATION

Indicatively, the consumption is 0,200 to 0,250 Kg/m² in one coat, depending on the absorbency of the substrate.

CODIFICATION	COLOR	PACKAGING	PACKAGING INFO	PALLET
14.026-43-01	Transparent	Pail 1 Kg	12 Pails / Box	-
14.026-43-05	Transparent	Pail 5 Kg	4 Pails / Box	-
14.026-43-10	Transparent	Pail 10 Kg	-	-
14.026-43-17	Transparent	Pail 17 Kg	-	-

EPOXY / POLYURETHANE / POLYURIAS, FOR FLOOR COATINGS AND PROTECTIVE PAINTS



EP 150

SHORT DESCRIPTION & APPLICATIONS

High quality, low-viscosity, 2-component, epoxy resin, solvent-free, with good resistance to chemicals, for decorative reaction resin coatings with quartz sand.

CONSUMPTION INFORMATION

Indicatively, the consumption is 0.250-0.350 Kg/m² for application as base coat and as mortar coating, for 6 mm thickness: 1,35 Kg/m² (mixing ratio 1:8), 1,10 Kg/m² (mixing ratio 1:10) and 1,00 Kg/m² (mixing ratio 1:12).

CODIFICATION	COLOR	PACKAGING	PACKAGING INFO	PALLET
19.10100	Colorless	Component A=6,6 Kg	2 pails set (A+B) 6,6+3,4 = 10 Kg	300 Kg
19.10101	Yellowish	Component B=3,4 Kg	2 pails set (A+B) 6,6+3,4 = 10 Kg	300 Kg
19.10200	Colorless	Component A=20,0 Kg	2 pails set (A+B) 20+10 = 30 Kg	540 Kg
19.10201	Yellowish	Component B=10,0 Kg	2 pails set (A+B) 20+10 = 30 Kg	540 Kg



EP 211 ESD

SHORT DESCRIPTION & APPLICATIONS

Electrically conductive, 2-component, epoxy resin floor coating, solvent-free, with good resistance to chemicals. It is especially designed for ESD (Electrostatic Discharge) Protected Areas.

Colors (might vary): RAL 7030, RAL 7032, RAL 7035, RAL 7038, RAL 7040.

Note: Due to the conductive adjustment and technical reasons, deviations in color tones may occur.

CONSUMPTION INFORMATION

Indicatively, the consumption is 1,5-1,8 Kg/m² recommended thickness layer 1,0 - 1,4 mm.

CODIFICATION	COLOR	PACKAGING	PACKAGING INFO	PALLET
According to RAL	Colored	Component A=25,0 Kg	2 pails set (A+B) 25+5 = 30 Kg	540 Kg
According to RAL	Yellowish	Component B=5,0 Kg	2 pails set (A+B) 25+5 = 30 Kg	540 Kg



EP 216 UNIVERSAL

SHORT DESCRIPTION & APPLICATIONS

Solvent-free, 2-component, epoxy resin coating and top coat, for smooth and slip resistant coatings. Ideal for car-parking areas, with OS 8 certification. Suitable for self-levelling coatings up to 4 mm. In case of application as a coating, it is needed 4% by weight, with thinner VR 24.

Basic Standard Colors (might vary): RAL 1001, RAL 1015, RAL 3009, RAL 6011, RAL 7001, RAL 7015, RAL 7023, RAL 7030, RAL 7032, RAL 7035, RAL 7038, RAL 7040.

CONSUMPTION INFORMATION

Indicatively, the consumption is 0,8-1,5 Kg/m² (thin coat) and 1,3-1,5 Kg/m²/mm layer (standard coat).

CODIFICATION	COLOR	PACKAGING	PACKAGING INFO	PALLET
According RAL	Basic Colors	Component A=24,0 Kg	2 pails set (A+B) 24+6 = 30 Kg	540 kg
According RAL	Yellowish	Component B=6,0 Kg	2 pails set (A+B) 24+6 = 30 Kg	540 kg
According RAL	Price Group A	Component A=24,0 Kg	2 pails set (A+B) 24+6 = 30 Kg	540 kg
According RAL	Yellowish	Component B=6,0 Kg	2 pails set (A+B) 24+6 = 30 Kg	540 kg



EP 280 WHG

SHORT DESCRIPTION & APPLICATIONS

Electrically conductive, 2-component, epoxy resin coating, solvent-free, with high resistance to chemicals and crack-bridging up to 0,2 mm. It is suitable for application in storage/handling facilities (LAU) and has been tested according to the Water Resources Act (WHG §63). The conductive property ensures protection against explosion.

Colors (might vary): RAL 1001, RAL 3009, RAL 6011, RAL 7015, RAL 7023, RAL 7030, RAL 7032, RAL 7038.

CONSUMPTION INFORMATION

Indicatively, the consumption is 2,4 - 2,6 Kg/m².

CODIFICATION	COLOR	PACKAGING	PACKAGING INFO	PALLET
According RAL	Colored	Component A=8,0 Kg	2 pails set (A+B) 8+2 = 10 Kg	360 kg
According RAL	Yellowish	Component B=2,0 Kg	2 pails set (A+B) 8+2 = 10 Kg	360 kg
According RAL	Colored	Component A=24,0 Kg	2 pails set (A+B) 24+6 = 30 Kg	540 kg
According RAL	Yellowish	Component B=6,0 Kg	2 pails set (A+B) 24+6 = 30 Kg	540 kg



EP 282 WHG

SHORT DESCRIPTION & APPLICATIONS

Colored, 2-component, epoxy resin coating, solvent-free, with high resistance to chemicals and crack-bridging up to 0,2 mm. It is suitable for application in storage/handling facilities (LAU) and has been tested according to the Water Resources Act (WHG §63). Colors (might vary): RAL 1001, RAL 3009, RAL 6011, RAL 7015, RAL 7023, RAL 7030, RAL 7032, RAL 7038, RAL 7042.

CONSUMPTION INFORMATION

Indicatively, the consumption is 2,4 – 2,6 Kg/m².

CODIFICATION	COLOR	PACKAGING	PACKAGING INFO	PALLET
According RAL	Colored	Component A=8,0 Kg	2 pails set (A+B) 8+2 = 10 Kg	360 kg
According RAL	Yellowish	Component B=2,0 Kg	2 pails set (A+B) 8+2 = 10 Kg	360 kg
According RAL	Colored	Component A=24,0 Kg	2 pails set (A+B) 24+6 = 30 Kg	540 kg
According RAL	Yellowish	Component B=6,0 Kg	2 pails set (A+B) 24+6 = 30 Kg	540 kg



PU 410

SHORT DESCRIPTION & APPLICATIONS

Colored, high quality, 2-component, low emission, light-stable, solvent-free, self-leveling polyurethane coating. It is flexible, with crack-bridging abilities, and specifically designed to meet the needs of modern decorative features, like offices and presentation halls.

Basic Standard Colors (might vary): RAL 1001, RAL 1015, RAL 3009, RAL 5014, RAL 6011, RAL 7001, RAL 7015, RAL 7016, RAL 7023, RAL 7030, RAL 7032, RAL 7035, RAL 7038, RAL 7040, RAL 7042.

CONSUMPTION INFORMATION

Indicatively, the consumption is 1,3 Kg/m²/mm layer.

CODIFICATION	COLOR	PACKAGING	PACKAGING INFO	PALLET
According RAL	Colored	Component A=6,60 Kg	2 pails set (A+B) 6,6+3,4 = 10 Kg	300 Kg
According RAL	Yellowish	Component B=3,4 Kg	2 pails set (A+B) 6,6+3,4 = 10 Kg	300 Kg
According RAL	Colored	Component A=20,0 Kg	2 pails set (A+B) 20+10 = 30 Kg	540 Kg
According RAL	Yellowish	Component B=10,0 Kg	2 pails set (A+B) 20+10 = 30 Kg	540 Kg



PU 420

SHORT DESCRIPTION & APPLICATIONS

Colored, elastic polyurethane floor coating system, two-component, low-emission, suitable for indoor applications and for substrates prone to deformation such as paving tiles, raised floors, asphalt, etc.

Basic Standard shades (approximate): RAL 1001, RAL 1015, RAL 3009, RAL 5014, RAL 6011, RAL 7001, RAL 7015, RAL 7016, RAL 7023, RAL 7030, RAL 7032, RAL 7035, RAL 7038, RAL 7040, RAL 7042.

CONSUMPTION INFORMATION

Indicatively, consumption is 1,45 kg/m²/mm layer.

CODIFICATION	COLOR	PACKAGING	PACKAGING INFO	PALLET
According RAL	Colored	Component A=10,0 Kg	2 pails set (A+B) 10+2 = 12 Kg	360 Kg
According RAL	Yellowish	Component B=2,0 Kg	2 pails set (A+B) 10+2 = 12 Kg	360 Kg
According RAL	Colored	Component A=25,0 Kg	2 pails set (A+B) 25+5 = 30 Kg	540 Kg
According RAL	Yellowish	Component B=5,0 Kg	2 pails set (A+B) 25+5 = 30 Kg	540 Kg



PU 484

SHORT DESCRIPTION & APPLICATIONS

PU 484 is a high-quality, non-yellowing, non-pigmented and solvent-free, 2-component polyurea resin for transparent top and coverage sealing of decorative sand scattered coatings. PU 484 may also be applied as a decorative, glossy clear resin layer on recommended coatings. The product consists of a medium-viscous, transparent, pale resin and a high-quality, non-pigmented hardener. The final material is transparent, non-yellowing and results in optically appealing, even surfaces. This characteristic is advantageous, particularly at higher temperature.

CONSUMPTION INFORMATION

Indicatively, the consumption is 0,5-0,8 Kg/m² for scattered coatings and 0,6-0,9 Kg/m² for clear resin coatings.

CODIFICATION	COLOR	PACKAGING	PACKAGING INFO	PALLET
19.96300	Transparent	Component A=4,0 Kg	2 pails set (A+B) 4,0+6,0 = 10 Kg	300 Kg
19.96301	Transparent	Component B=6,0 Kg	2 pails set (A+B) 4,0+6,0 = 10 Kg	300 Kg



EP 740 E

SHORT DESCRIPTION & APPLICATIONS

Water-based, economical, matt, solvent-free, 2-component, epoxy resin emulsion sealer, suitable for industrial and commercial areas, exposed to light load. For normal substrates, with medium loads, apply first layer as a primer, diluted 5-10% with water. Basic Standard Colors (might vary): RAL 1001, RAL 1015, RAL 3009, RAL 5014, RAL 6011, RAL 7001, RAL 7015, RAL 7016, RAL 7023, RAL 7030, RAL 7032, RAL 7035, RAL 7038, RAL 7040, RAL 7042.

CONSUMPTION INFORMATION

Indicatively, the consumption is 0,200-0,250 Kg/m²/layer.

CODIFICATION	COLOR	PACKAGING	PACKAGING INFO	PALLET
According RAL NEW	Transparent	Component A=1,7 Kg	2 pails set (A+B) 1,7+8,3 = 10 Kg	300 Kg
According RAL NEW	Basic Colors	Component B=8,3 Kg	2 pails set (A+B) 1,7+8,3 = 10 Kg	300 Kg
According RAL NEW	Transparent	Component A=1,7 Kg	2 pails set (A+B) 1,7+8,3 = 10 Kg	300 Kg
According RAL NEW	Price Group A	Component B=8,3 Kg	2 pails set (A+B) 1,7+8,3 = 10 Kg	300 Kg
According RAL	Transparent	Component A=4,2 Kg	2 pails set (A+B) 4,2+20,8 = 25 Kg	300 Kg
According RAL	Basic Colors	Component B=20,8 Kg	2 pails set (A+B) 4,2+20,8 = 25 Kg	300 Kg
According RAL	Transparent	Component A=4,2 Kg	2 pails set (A+B) 4,2+20,8 = 25 Kg	300 Kg
According RAL	Price Group A	Component B=20,8 Kg	2 pails set (A+B) 4,2+20,8 = 25 Kg	300 Kg



EP 799 ABLEITGRUND

SHORT DESCRIPTION & APPLICATIONS

Electrically highly conductive, solvent-free, 2-component, epoxy resin base coat, with resistance to hydrolysis and saponification.

CONSUMPTION INFORMATION

Indicatively, the consumption is 0,100 - 0,140 Kg/m².

CODIFICATION	COLOR	PACKAGING	PACKAGING INFO	PALLET
19.18100	Transparent	Component A=2,0 Kg	2 pails set (A+B) 2+8 = 10 Kg	540 kg
19.18101	Black	Component B=8,0 Kg	2 pails set (A+B) 2+8 = 10 Kg	540 kg



PU 805 E

SHORT DESCRIPTION & APPLICATIONS

High quality, low-emission, environmental friendly, solvent-free, light-stable, 2-component, polyurethane matt sealer. Suitable for coatings that comply with the "Eurofins Indoor Air Comfort" and the Gold certification. Easy to handle. Resistant to yellowing.

CONSUMPTION INFORMATION

Indicatively, the consumption is 0,120 – 0,160 Kg/m².

CODIFICATION	COLOR	PACKAGING	PACKAGING INFO	PALLET
19.09100	Transparent	Component A=4,4 Kg	2 pails set (A+B) 4,4+0,6 = 5 Kg	450 Kg
19.09101	Yellowish	Component B=0,6 Kg	2 pails set (A+B) 4,4+0,6 = 5 Kg	450 Kg
19.09200	Transparent	Component A=8,8 Kg	2 pails set (A+B) 8,8+1,2 = 10 Kg	600 Kg
19.09201	Yellowish	Component B=1,2 Kg	2 pails set (A+B) 8,8+1,2 = 10 Kg	600 Kg



PU 806 E

SHORT DESCRIPTION & APPLICATIONS

High quality, colored, low-emission, environmentally friendly, solvent-free, light-stable, 2-component, polyurethane matt sealer. Tested for areas that comply with the "Eurofins Indoor Air Comfort" and the Gold certification.

Basic Colors (might vary): RAL 1001, RAL 1015, RAL 3009, RAL 5014, RAL 6011, RAL 7001, RAL 7015, RAL 7016, RAL 7023, RAL 7030, RAL 7032, RAL 7035, RAL 7038, RAL 7040, RAL 7042.

CONSUMPTION INFORMATION

Indicatively, the consumption is 0,140 – 0,180 Kg/m².

CODIFICATION	COLOR	PACKAGING	PACKAGING INFO	PALLET
According RAL	Colored	Component A=4,4 Kg	2 pails set (A+B) 4,4+0,6 = 5 Kg	450 Kg
According RAL	Yellowish	Component B=0,6 Kg	2 pails set (A+B) 4,4+0,6 = 5 Kg	450 Kg
According RAL	Colored	Component A=8,8 Kg	2 pails set (A+B) 8,8+1,2 = 10 Kg	600 Kg
According RAL	Yellowish	Component B=1,2 Kg	2 pails set (A+B) 8,8+1,2 = 10 Kg	600 Kg



PU 806 E WALL

SHORT DESCRIPTION & APPLICATIONS

High quality, colored, low-emission, environmentally friendly, solvent-free, light-stable, 2-component, polyurethane matt sealer. Suitable for application on walls and ceilings (combined with EP 652 W). Tested for areas that comply with the "Eurofins Indoor Air Comfort" and the Gold certification.

Basic Standard Colors (might vary): RAL 1001, RAL 1015, RAL 3009, RAL 5014, RAL 6011, RAL 7001, RAL 7015, RAL 7016, RAL 7023, RAL 7030, RAL 7032, RAL 7035, RAL 7038, RAL 7040, RAL 7042.

CONSUMPTION INFORMATION

Indicatively, the consumption is 0,100 – 0,120 Kg/m².

CODIFICATION	COLOR	PACKAGING	PACKAGING INFO	PALLET
According RAL	Colored	Component A=5,4 Kg	2 pails set (A+B) 5,4+0,6 = 6 Kg	540 Kg
According RAL	Yellowish	Component B=0,6 Kg	2 pails set (A+B) 5,4+0,6 = 6 Kg	540 Kg
According RAL	Colored	Component A=10,8 Kg	2 pails set (A+B) 10,8+1,2 = 12 Kg	720 Kg
According RAL	Yellowish	Component B=1,2 Kg	2 pails set (A+B) 10,8+1,2 = 12 Kg	720 Kg



PU 811 E

SHORT DESCRIPTION & APPLICATIONS

High quality, polyurethane-based, 2-component, transparent, matt sealer, very low emissions, environmentally friendly. Also suitable for indoor areas, with air quality requirements. Easy to use. Light-stable, Resistant to yellowing.

CONSUMPTION INFORMATION

Indicatively, the consumption is 0,090 – 0,120 Kg/m².

CODIFICATION	COLOR	PACKAGING	PACKAGING INFO	PALLET
19.99129	Transparent	Component A=4,4 Kg	2 pails set (A+B) 4,4+0,6 = 5 Kg	450 Kg
19.99130	Yellowish	Component B=0,6 Kg	2 pails set (A+B) 4,4+0,6 = 5 Kg	450 Kg
-	Transparent	Component A=8,8 Kg	2 pails set (A+B) 8,8+1,2 = 10 Kg	600 Kg
-	Yellowish	Component B=1,2 Kg	2 pails set (A+B) 8,8+1,2 = 10 Kg	600 Kg

**NEW
PRODUCT**



PU 812 E

**NEW
PRODUCT**

SHORT DESCRIPTION & APPLICATIONS

High quality, polyurethane-based, 2-component, colored, matt sealer, light-stable, very low emission, environmentally friendly. Suitable for indoor applications with air quality requirements.

Basic Colors (might vary): RAL 1001, RAL 1015, RAL 3009, RAL 5014, RAL 6011, RAL 7001, RAL 7015, RAL 7016, RAL 7023, RAL 7030, RAL 7032, RAL 7035, RAL 7038, RAL 7040, RAL 7042.

CONSUMPTION INFORMATION

Indicatively, the consumption is 0,180 – 0,200 Kg/m².

CODIFICATION	COLOR	PACKAGING	PACKAGING INFO	PALLET
According RAL	Colored	Component A=4,4 Kg	2 pails set (A+B) 4,4+0,6 = 5 Kg	450 Kg
According RAL	Yellowish	Component B=0,6 Kg	2 pails set (A+B) 4,4+0,6 = 5 Kg	450 Kg
According RAL	Colored	Component A=8,8 Kg	2 pails set (A+B) 8,8+1,2 = 10 Kg	600 Kg
According RAL	Yellowish	Component B=1,2 Kg	2 pails set (A+B) 8,8+1,2 = 10 Kg	600 Kg



EP 860

SHORT DESCRIPTION & APPLICATIONS

Colorless, 2-component, matt, epoxy resin sealer, with high resistance to chemicals. Ideal for industrial areas with high loads.

CONSUMPTION INFORMATION

Indicatively, the consumption is 0,130-0,180 Kg/m² for each application.

CODIFICATION	COLOR	PACKAGING	PACKAGING INFO	PALLET
19.15100	Light Brown	Component A=8,0 Kg	2 pails set (A+B) 8+2 = 10 Kg	300 Kg
19.15101	Yellowish	Component B=2 Kg	2 pails set (A+B) 8+2 = 10 Kg	300 Kg
19.15200	Light Brown	Component A=20,0 Kg	2 pails set (A+B) 20+5 = 25 Kg	300 Kg
19.15201	Yellowish	Component B=5,0 Kg	2 pails set (A+B) 20+5 = 25 Kg	300 Kg



EP 861

SHORT DESCRIPTION & APPLICATIONS

Colored, 2-component, matt, epoxy resin sealer, with high resistance to chemicals. Ideal for industrial areas with high loads.

Basic Standard Colors (might vary): RAL 1001, RAL 1015, RAL 3009, RAL 5014, RAL 6011, RAL 7001, RAL 7015, RAL 7016, RAL 7023, RAL 7030, RAL 7032, RAL 7035, RAL 7038, RAL 7040, RAL 7042.

CONSUMPTION INFORMATION

Indicatively, the consumption is 0,130-0,180 Kg/m² for each application.

CODIFICATION	COLOR	PACKAGING	PACKAGING INFO	PALLET
19.14100	Colored	Component A=8,1 Kg	2 pails set (A+B) 8,1+1,9 = 10 Kg	300 Kg
19.14101	Yellowish	Component B=1,9 Kg	2 pails set (A+B) 8,1+1,9 = 10 Kg	300 Kg
19.14200	Colored	Component A=20,25 Kg	2 pails set (A+B) 20,25+4,75 = 25 Kg	300 Kg
19.14201	Yellowish	Component B=4,75 Kg	2 pails set (A+B) 20,25+4,75 = 25 Kg	300 Kg



PENECOAT™ TOP CLEAR

SHORT DESCRIPTION & APPLICATIONS

One component, acrylic varnish with good UV resistance for waterproofing and protection of natural or artificial stones, bricks, slabs and for the protection of stamped flooring.

CONSUMPTION INFORMATION

Indicatively, for 1 or 2 coats the total consumption is 0,200 - 0,300 Kg/m² per layer.

CODIFICATION	COLOR	PACKAGING	PACKAGING INFO	PALLET
14.026-86-04	Transparent	Pail 4 Kg	4 Pails / Box	-
14.026-86-17	Transparent	Pail 17 Kg	-	-

ELECTRICALLY CONDUCTIVE FLOORING SYSTEMS



EP 50

SHORT DESCRIPTION & APPLICATIONS

High quality, epoxy based, 2-component, resin primer, low-viscosity, solvent-free. It is applied as a primer, before the application of epoxy products, as well as scratch coat. For better adhesion between layers, dry-shake application of QUARTZ SAND MIX 0,4-0,8 MM is suggested. Compatible for ESD Flooring System.

CONSUMPTION INFORMATION

Indicatively, the consumption is 0,3-0,4 Kg/m² for application as a primer and 0,4-0,6 Kg/m² for scratch coat.

CODIFICATION	COLOR	PACKAGING	PACKAGING INFO	PALLET
19.16200	Colorless	Component A=6,6 Kg	2 pails set (A+B) 6,6+3,4 = 10 Kg	300 Kg
19.16201	Yellowish	Component B=3,4 Kg	2 pails set (A+B) 6,6+3,4 = 10 Kg	300 Kg
19.16100	Colorless	Component A=20 Kg	2 pails set (A+B) 20+10 = 30 Kg	540 Kg
19.16101	Yellowish	Component B=10 Kg	2 pails set (A+B) 20+10 = 30 Kg	540 Kg



EP 799 ABLEITGRUND

SHORT DESCRIPTION & APPLICATIONS

Electrically highly conductive, solvent-free, 2-component, epoxy resin base coat, with resistance to hydrolysis and saponification.

CONSUMPTION INFORMATION

Indicatively, the consumption is 0,100 – 0,140 Kg/m².

CODIFICATION	COLOR	PACKAGING	PACKAGING INFO	PALLET
19.18100	Transparent	Component A=2,0 Kg	2 pails set (A+B) 2+8 = 10 Kg	540 kg
19.18101	Black	Component B=8,0 Kg	2 pails set (A+B) 2+8 = 10 Kg	540 kg



EP 280 WHG

SHORT DESCRIPTION & APPLICATIONS

Electrically conductive, 2-component, epoxy resin coating, solvent-free, with high resistance to chemicals and crack-bridging up to 0.2 mm. It is suitable for application in storage/handling facilities (LAU) and has been tested according to the Water Resources Act (WHG). The conductive property ensures protection against explosion.

Colors (might vary): RAL 1001, RAL 3009, RAL 6011, RAL 7015, RAL 7023, RAL 7030, RAL 7032, RAL 7038.

CONSUMPTION INFORMATION

Indicatively, the consumption is 2,4 – 2,6 Kg/m².

CODIFICATION	COLOR	PACKAGING	PACKAGING INFO	PALLET
According RAL	Colored	Component A=8,0 Kg	2 pails set (A+B) 8+2 = 10 Kg	360 kg
According RAL	Yellowish	Component B=2,0 Kg	2 pails set (A+B) 8+2 = 10 Kg	360 kg
According RAL	Colored	Component A=24,0 Kg	2 pails set (A+B) 24+6 = 30 Kg	540 kg
According RAL	Yellowish	Component B=6,0 Kg	2 pails set (A+B) 24+6 = 30 Kg	540 kg



EP 211 ESD

SHORT DESCRIPTION & APPLICATIONS

Electrically conductive, 2-component, epoxy resin floor coating, solvent-free, with good resistance to chemicals. It is especially designed for ESD (Electrostatic Discharge) Protected Areas.

Colors (might vary): RAL 7030, RAL 7032, RAL 7035, RAL 7038, RAL 7040.

Note: Due to the conductive adjustment and technical reasons, deviations in color tones may occur.

CONSUMPTION INFORMATION

Indicatively, the consumption is 1,5-1,8 Kg/m² recommended thickness layer 1,0 - 1,4 mm.

CODIFICATION	COLOR	PACKAGING	PACKAGING INFO	PALLET
According RAL	Colored	Component A=25,0 Kg	2 pails set (A+B) 25+5 = 30 Kg	540 Kg
According RAL	Yellowish	Component B=5,0 Kg	2 pails set (A+B) 25+5 = 30 Kg	540 Kg

CHEMORESIN PU-BETON: POLYURETHANE SYSTEMS FOR SPECIAL APPLICATIONS



CHEMORESIN PU-BETON 4051 PRIMER

**NEW
PRODUCT**

SHORT DESCRIPTION & APPLICATIONS

Solvent-free, 3-component, polyurethane base coat, as system component of CHEMORESIN PU-BETON system.

CONSUMPTION INFORMATION

Indicatively, the consumption is 0,400-0,500 Kg/m².

CODIFICATION	COLOR	PACKAGING	PACKAGING INFO	PALLET
19.80103	Yellowish	Component A=2 Kg	3 pails set (A+B+C) 2+2+2 = 6 Kg	-
19.80104	Brown	Component B=2 Kg	3 pails set (A+B+C) 2+2+2 = 6 Kg	-
19.80105	Grey	Component Γ=2 Kg	3 pails set (A+B+C) 2+2+3 = 6 Kg	-
	Yellowish	Component A=6 Kg	3 pails set (A+B+C) 6+6+6 = 18 Kg	-
	Brown	Component B=6 Kg	3 pails set (A+B+C) 6+6+6 = 18 Kg	-
	Grey	Component Γ=6 Kg	3 pails set (A+B+C) 6+6+6 = 18 Kg	-



CHEMORESIN PU-BETON 4006

**NEW
PRODUCT**

SHORT DESCRIPTION & APPLICATIONS

High quality, 3-component, polyurethane, mortar coating, basic product of CHEMORESIN PU-BETON system, for thickness application up to 7 mm. System: component A, B is PU 4000 and component C is PU 4006. Suitable for areas exposed to hot water and chemicals, as well as food industry. CHEMORESIN PU-BETON 4006 can be applied as smooth coating or slip resistant. Colors: Beige, Red, Green, Grey.

CONSUMPTION INFORMATION

Indicatively, the consumption is 10 - 14 Kg/m² in layers of 5 - 7 mm.

CODIFICATION	COLOR	PACKAGING	PACKAGING INFO	PALLET
According to color	Yellowish	Component A=3,0 Kg	3 pack set (A+B+C) 3,0+3,0+20 = 26,0 Kg	-
According to color	Brown	Component B=3,0 Kg	3 pack set (A+B+C) 3,0+3,0+20 = 26,0 Kg	-
According to color	Colored	Component Γ=20,0 Kg	3 pack set (A+B+C) 3,0+3,0+20 = 26,0 Kg	-



CHEMORESIN PU-BETON 4012

**NEW
PRODUCT**

SHORT DESCRIPTION & APPLICATIONS

Special, 3-component + pigment, colored, polyurethane, mortar coating. Suitable for areas exposed to hot water and chemicals. Colors: Beige, Red, Green, Grey.

CONSUMPTION INFORMATION

Indicatively, the consumption is 2,2 - 2,8 Kg/m, in radius of 5 cm.

CODIFICATION	COLOR	PACKAGING	PACKAGING INFO	PALLET
According to color	Yellowish	Component A = 1,0 Kg	3 pails set (A+B+C) 1,0 + 1,0 + 13 = 15,05 Kg *	-
According to color	Brown	Component B = 1,0 Kg	3 pails set (A+B+C) 1,0 + 1,0 + 13 = 15,05 Kg *	-
According to color	Grey	Component Γ = 13,0 Kg	3 pails set (A+B+C) 1,0 + 1,0 + 13 = 15,05 Kg *	-
According to color	Colored	Pigment = 0,050 Kg	* Pigment included = 0,050 Kg	-



CHEMORESIN PU-BETON 4080

**NEW
PRODUCT**

SHORT DESCRIPTION & APPLICATIONS

Special, 3-component, colored, polyurethane top sealer, for PU-BETON system, on top of properly prepared, with quartz sand, substrates.

Colors: Beige, Red, Green, Grey.

CONSUMPTION INFORMATION

Indicatively, the consumption is 0,650 - 0,900 Kg/m².

CODIFICATION	COLOR	PACKAGING	PACKAGING INFO	PALLET
According to color	Yellowish	Component A = 2,0 Kg	3 pails set (A+B+C) 2,0 + 2,0 + 3,6 = 7,6 Kg	-
According to color	Brown	Component B = 2,0 Kg	3 pails set (A+B+C) 2,0 + 2,0 + 3,6 = 7,6 Kg	-
According to color	Colored	Component Γ = 3,6 Kg	3 pails set (A+B+C) 2,0 + 2,0 + 3,6 = 7,6 Kg	-

FLOORING SYSTEM FOR REFRIGERATORS AND FREEZERS



PENEPOX[™] SF PRIMER Set (A+B)

SHORT DESCRIPTION & APPLICATIONS

Two component, solvent free, epoxy primer with high mechanical and chemical properties. Primer for the PENEPOX[™] SF ELASTIC system, but also for the PENEPOX[™] flooring and coatings epoxies. As coating, it hardens and stabilizes surfaces. Can be combined with quartz sand in internal flooring applications.

CONSUMPTION INFORMATION

Indicatively, the consumption is 0,250 Kg/m² for one coat and depending the substrates absorbedness. The quartz sand combination increases consumption.

CODIFICATION	COLOR	PACKAGING	PACKAGING INFO	PALLET
14.026-44-04	Transparent	Component A=4 Kg	2 pails set (A+B) 4+2 = 6 Kg	-
14.026-45-02	Transparent	Component B=2 Kg	2 pails set (A+B) 4+2 = 6 Kg	-
14.026-44-08	Transparent	Component A=8 Kg	2 pails set (A+B) 8+4 = 12 Kg	-
14.026-45-04	Transparent	Component B=4 Kg	2 pails set (A+B) 8+4 = 12 Kg	-



EP 28*

SHORT DESCRIPTION & APPLICATIONS

Epoxy based, 2-component, economic, resin primer, with very low viscosity, solvent-free, for general purpose. It is applied as a primer, before the application of epoxy products, as well as scratch coat. Also, it can be used for repairs and levelling purposes. For better adhesion between layers, dry-shake application of QUARTZ SAND MIX 0,4-0,8 MM is suggested.

* EP 5530 could be alternatively used instead of EP 28.

CONSUMPTION INFORMATION

Indicatively, the consumption is 0,3-0,4 Kg/m² for application as a primer, 0,4-0,6 Kg/m² for scratch coat and 0,150-0,300 Kg/m²/mm of thickness layer for application as a mortar.

CODIFICATION	COLOR	PACKAGING	PACKAGING INFO	PALLET
19.03100	Colorless	Component A=6,8 Kg	2 pails set (A+B) 6,8+3,2 = 10 Kg	300 Kg
19.03101	Yellowish	Component B=3,2 Kg	2 pails set (A+B) 6,8+3,2 = 10 Kg	300 Kg
19.03003	Colorless	Component A=20,4 Kg	2 pails set (A+B) 20,4+9,6 = 30 Kg	540 Kg
19.03004	Yellowish	Component B=9,6 Kg	2 pails set (A+B) 20,4+9,6 = 30 Kg	540 Kg



PENECOAT™ SL Set (A+B)

SHORT DESCRIPTION & APPLICATIONS

Semi-rigid self-leveling or as coating, two component polyurethane material, without solvents. Provides elasticity, resistance to mechanical stresses and chemical attack by acids, bases, common chemicals and detergents. Suitable for floors in refrigerators and freezers down to -40°C.

CONSUMPTION INFORMATION

Indicatively, consumption as self-leveling material is 1,5 - 3 Kg/m² in total, depending on the desired coating thickness. As a coating, total consumption is 0,5-0,8 Kg/m².

CODIFICATION	COLOR	PACKAGING	PACKAGING INFO	PALLET
14.002-00-06	Grey	Component A=6 Kg	2 pails set (A+B) 6+2 = 8 Kg	-
14.002-01-02	Transparent	Component B=2 Kg	2 pails set (A+B) 6+2 = 8 Kg	-



PENEPRIMER™ PU

SHORT DESCRIPTION & APPLICATIONS

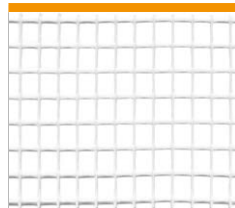
One component, transparent, polyurethane, stabilizing primer for porous surfaces of concrete, mortars, etc. Suitable for the preparation of polyurethane coatings, such as PENECOAT™ ELASTIC, PENECOAT™ PU-H and PENEFLOOR™ PU-COAT. The waiting time, as primer, is 2-3 hours, depending on the conditions.

CONSUMPTION INFORMATION

Indicatively, the consumption is 0,200 to 0,250 Kg/m² in one coat, depending on the absorbedness of the substrate.

CODIFICATION	COLOR	PACKAGING	PACKAGING INFO	PALLET
14.026-43-01	Transparent	Pail 1 Kg	12 Pails / Box	-
14.026-43-05	Transparent	Pail 5 Kg	4 Pails / Box	-
14.026-43-10	Transparent	Pail 10 Kg	-	-
14.026-43-17	Transparent	Pail 17 Kg	-	-

SOLVENTS AND SUPPLEMENTARY PRODUCTS



FIBERGLASS MESH VA 1040

SHORT DESCRIPTION & APPLICATIONS

Fiberglass mesh for reinforcement of resin systems application (floor and wall). It is strongly recommended for the reinforcement of wall coatings, like, for example PU 662.

CODIFICATION	COLOR	PACKAGING	PACKAGING INFO	PALLET
19.10100	White	Roll 1x100 m	-	-



VR 24

SHORT DESCRIPTION & APPLICATIONS

Thinner and cleanser for epoxy resins.

Highly flammable.

Not suitable for polyurethane resins.

CODIFICATION	COLOR	PACKAGING	PACKAGING INFO	PALLET
19.06100	Transparent	10 L	-	-



VR 28

SHORT DESCRIPTION & APPLICATIONS

Thinner and cleanser for polyurethane resins and for specific epoxy resins as well.

Flammable.

**NEW
PRODUCT**

CODIFICATION	COLOR	PACKAGING	PACKAGING INFO	PALLET
19.06200	Transparent	10 L	-	-



STELLMITTEL 3 SUPER

SHORT DESCRIPTION & APPLICATIONS

Thixotropic agent, in white powder form. Thickening agent for multiple thixotropic coatings, vertical surfaces, covings, etc.

Not suitable for CHEMORESIN PU 410.

CODIFICATION	COLOR	PACKAGING	PACKAGING INFO	PALLET
19.60100	White	1,5 Kg	-	-



STELLMITTEL 5 FT

SHORT DESCRIPTION & APPLICATIONS

Thixotropic agent, in white fibres form. Easy and dust-free incorporation. Ideal for mortar mixtures.

Suitable for CHEMORESIN PU 410.

CODIFICATION	COLOR	PACKAGING	PACKAGING INFO	PALLET
19.60200	White	1,5 Kg	-	-



PARTICOLOR®-GLITTER

SHORT DESCRIPTION & APPLICATIONS

Glitter, in powder form, for mixing with a transparent binding agent (e.g. PU 475 SPEZIAL), for the production of effect coatings.

CODIFICATION	COLOR	PACKAGING	PACKAGING INFO	PALLET
19.55100	Light Silver	1 Kg	-	-
19.55101	Light Gold	1 Kg	-	-
19.55102	Black	1 Kg	-	-



PARTICOLOR®-CHIPS (Color FLAKES) 1 and 3

SHORT DESCRIPTION & APPLICATIONS

Decorative color flakes, size 1 and 3 mm for decorative epoxy, polyurethane or acrylic resin coatings.
Available in single colors only - No mixtures.

CODIFICATION	COLOR	PACKAGING	PACKAGING INFO	PALLET
According to color	PCC1 - Colored	1 Kg	-	-
According to color	PCC1 - Colored	10 Kg	-	-
According to color	PCC3 - Colored	1 Kg	-	-
According to color	PCC3 - Colored	10 Kg	-	-

Colors available for **PARTICOLOR®**

The color tones could have been affected by the printing process, if in doubt, please request an original sample.

Signal White	Light Ivory	Sand Yellow	Sulphur Yellow	Traffic Yellow
Pastel Orange	Strawberry Red	Signal Red	Beige Brown	Cobalt Blue
Traffic Blue	Pastel Blue	Turquoise Blue	MintTurquoise	Pale Green
Pale Grey	Signal Grey	Stone Grey	Dusty Grey	Signal Black
Yellow Green				



COPPER TAPE

SHORT DESCRIPTION & APPLICATIONS

Self-adhesive, electrically conductive copper tape. Use for earthing of discharge layers.

CODIFICATION	COLOR	PACKAGING	PACKAGING INFO	PALLET
19.53100	Copper	Roll 50 m	1 roll of 50 m	-



RHX 75

SHORT DESCRIPTION & APPLICATIONS

High quality, edgy granulate. Used as additive for sealers, e.g. PU 883, PU 881 EL, EP 740 E (to increase anti-slip grade to R10) and PU 880, PU 881, PU 882, PU 806 E (to increase anti-slip grade to R11) and more. Dosage 3-6%, depending on application. Also, it is suitable for transparent sealers.

CODIFICATION	COLOR	PACKAGING	PACKAGING INFO	PALLET
19.54100	White	0,75 Kg	-	-
19.54101	White	5,00 Kg	-	-

CEMENTITIOUS SELF LEVELING FLOORING SYSTEMS / PRIMERS



INDUSTRIAL TOPPING SL

SHORT DESCRIPTION & APPLICATIONS

One component, high strength, self leveling mortar with polymers for internal or external use, even as final surface or flooring repairing. Ideal application for thicknesses up to 50 mm or, otherwise, with the addition of QUARTZ SAND MIX (~7 Kg / Bag) Mixing: 1 bag in 4.25 L water.

CONSUMPTION INFORMATION

Indicatively, the consumption (without quartz sand addition) is: ~1,8 Kg/m² per 1 mm thickness. With the quartz sand addition the product consumption decreases up to 30%.

CODIFICATION	COLOR	PACKAGING	PACKAGING INFO	PALLET
10.12001	Grey	Bag 22,70 Kg	48 Bags / Pallet	1.089,60 Kg



PREMIUM UNDERLAYMENT SL

SHORT DESCRIPTION & APPLICATIONS

Self-curing, self-leveling floor underlayment that is used to create a level, flat and durable surface prior to the installation of finished floor coverings. Mixed with water only, PREMIUM UNDERLAYMENT SL's Ethylene-Vinyl Acetate binding system creates an excellent bond to virtually any substrate and can be installed from featheredge up to 3,8 cm (1 ½") neat and up to 13 cm (5") extended with aggregate. PREMIUM UNDERLAYMENT SL provides a substrate that can accept ceramic tile and natural stone within 3-4 hours after application. Finished floor coverings, such as carpet, VCT, vinyl sheet goods, rubber, epoxy, and engineered wood plank, can be installed in as little as 24 hours.

CONSUMPTION INFORMATION

Indicatively, 1 bag (22,70 kg) is used for 4,7 m² for 3 mm thickness and kai 2,3 m² for 6 mm thickness..

CODIFICATION	COLOR	PACKAGING	PACKAGING INFO	PALLET
10.12006	Grey	Bag 22,70 Kg	48 Bags / Pallet	1.089,60 Kg



PENETRON® GROUT FLOOR

SHORT DESCRIPTION & APPLICATIONS

One component, cement based, pourable, leveling mortar, high strength, for filling floors with mechanical stress. Compatible with the respective adhesion primers, depending on the absorbency of the substrate.

CONSUMPTION INFORMATION

Indicatively, consumption varies between 1,9 - 2,0 Kg/m²/mm thickness. Applied in thicknesses between 6 mm to 30 mm, without adding aggregates.

CODIFICATION	COLOR	PACKAGING	PACKAGING INFO	PALLET
12.021-342	Grey	Bag 25 Kg	60 Bags / Pallet	1.500 Kg



PENETRON® QUICK PATCH

SHORT DESCRIPTION & APPLICATIONS

One component, polymer modified grout mortar, with very high strength, for quick repair of industrial concrete floors. For thicknesses up to 50 mm, or otherwise, with quartz QUARTZ SAND MIX (~ 11,3 Kg/Bag). Mixing: 1 bag at 3,1 L water.

CONSUMPTION INFORMATION

Indicatively, the consumption (without the addition of quartz sand) is: ~1,9 Kg/m² per 1 mm thickness or 1 bag for filling 12 L. With the addition of quartz sand, the product's consumption decreases correspondingly.

CODIFICATION	COLOR	PACKAGING	PACKAGING INFO	PALLET
10.20006	Grey	Bag 22,70 Kg	48 Bags / Pallet	1.089,60 Kg



PENETRON[®] CR-90

SHORT DESCRIPTION & APPLICATIONS

One component, polymer modified, new technology (also replaces PENETRON[®] DRESSCRETE), repairing mortar for finishing from feather edge to a maximum thickness of 13 mm with reduced water absorbency. Suitable for vertical and horizontal concrete surfaces such as walls, facades, stairs, corridors, and passable floors or even in pools surrounding areas. Walkable in approx. 2-3 hours. Excellent adhesion even without the use of primer, in a well damp surface. **Mixing:** 22.70 Kg bag, in 3,8-5,2 L of water.

CONSUMPTION INFORMATION

Indicatively, the consumption per 1 mm repair thickness is ~1,6 Kg/m² hence the 22,70 Kg bag covers ~15 m² for 1 mm filling.

CODIFICATION	COLOR	PACKAGING	PACKAGING INFO	PALLET
10.20007	Grey	Bag 22,70 Kg	48 Bags / Pallet	1.089,60 Kg
10.20008	White	Bag 22,70 Kg	48 Bags / Pallet	1.089,60 Kg



PRIMER STX 100[™]

SHORT DESCRIPTION & APPLICATIONS

Acrylic based primer to increase adhesion to absorbent and non-absorbent substrates. **For absorbent substrates:** Two coats, 1: 3 and 1: 1 water diluted, respectively. **For normal substrates (eg. concrete):** One coat, 1: 1 water diluted. **For non-absorbent substrates (eg. tiles, metal, epoxy):** One coat, insoluble. Each layer should have dried well. Open adhesion time ~ 24 hours. Suitable as a primer for self-leveling mortars, like INDUSTRIAL TOPPING SL, STANDARD UNDERLAYMENT SL etc.

CONSUMPTION INFORMATION

Indicatively: 18 - 22 m² per 3,8 L pail. **Attention:** good surface preparation.

CODIFICATION	COLOR	PACKAGING	PACKAGING INFO	PALLET
10.11006	Blue	Pail 3,8 L	4 Pails / Box	100 Pails / ~ 400 Kg



PENEPOX[™] W Set (A+B)

SHORT DESCRIPTION & APPLICATIONS

Two component, transparent, epoxy water based primer for PENEPOX[™] ELASTIC on non porous surfaces, such as metals, tiles, old acrylics, bitumen etc. The mixture is diluted with water 10-20%. Also with dilution up to 50% with water it can be used as a very strong stabilizer of unstable substrates. The waiting time, as primer, is 4-12 hours, depending on the conditions (slow down during winter time).

CONSUMPTION INFORMATION

Indicatively, the consumption is 0,150 to 0,200 Kg/m² in one coat and depending on the substrate absorbency. As stabilizer for unstable substrates, it may increase its consumption.

CODIFICATION	COLOR	PACKAGING	PACKAGING INFO	PALLET
14.026-01-03	Transparent	Component A=3 Kg	2 pails set (A+B) 3+1 = 4 Kg	-
14.026-02-01	Transparent	Component B=1 Kg	2 pails set (A+B) 3+1 = 4 Kg	-
14.026-01-15	Transparent	Component A=15 Kg	2 pails set (A+B) 15+5 = 20 Kg	-
14.026-02-05	Transparent	Component B=5 Kg	2 pails set (A+B) 15+5 = 20 Kg	-

BONDING SYSTEMS FOR WOODEN FLOORS, TILES



S-BOND FLEX

SHORT DESCRIPTION & APPLICATIONS

S-BOND FLEX is a ready-to-use, isocyanate and solvent free, high-elastic strength wood-flooring adhesive, based on a Silyl Modified Polymer. It can be easily applied by a trowel and it significantly reduces the time of wood-flooring applications. Cures by reaction with air moisture. No need of any special adhesion primer on sound substrates.

CONSUMPTION INFORMATION

Indicatively, 0,9 to 1,4 Kg/m², according to the superficial condition of the support.

CODIFICATION	COLOR	PACKAGING	PACKAGING INFO	PALLET
16.05006	Brown	Pail 16 Kg	44 Pails / Pallet	704 Kg

ELASTIC SEALING AND BONDING SYSTEMS / PRIMERS / PE BACKING RODS



U-SEAL 907

SHORT DESCRIPTION & APPLICATIONS

One component, thixotropic, soft, polyurethane sealing material. Low cost, suitable for general sealing applications in joints with high traffic. Applicable in the sealing of pre-cast parts joints, buildings facades, construction joints, frames, etc.

CONSUMPTION INFORMATION

Indicatively, the 600 ml unipack seals approx. 6 linear meters of joint 1 x 1 cm.

CODIFICATION	COLOR	PACKAGING	PACKAGING INFO	PALLET
16.08002	White	Unipack 600 ml	20 Unipacks / Box	1,000 Unip. / ~800 Kg
16.08001	Grey	Unipack 600 ml	20 Unipacks / Box	1,000 Unip. / ~800 Kg



U-SEAL 500

SHORT DESCRIPTION & APPLICATIONS

One component, thixotropic, fast curing, sealing and bonding material. Suitable for sealing joints of regular traffic or bonding connections. Application on surfaces from concrete, wood, metal, glass, ceramics, etc. Can bear small surface distress (e.g. flooring joints).

CONSUMPTION INFORMATION

Indicatively, the 600 ml unipack seals approx. 6 linear meters of joint 1 x 1 cm and, correspondingly, the 310 ml cartridge seals approx. 3 linear meters of joint 1 x 1 cm.

CODIFICATION	COLOR	PACKAGING	PACKAGING INFO	PALLET
16.10101	White	Cartridge 310 ml	12 Cartridges / Box	1.560 Cart. / ~640 Kg
16.10102	Grey	Cartridge 310 ml	12 Cartridges / Box	1.560 Cart. / ~640 Kg
16.10103	Black	Cartridge 310 ml	12 Cartridges / Box	1.560 Cart. / ~640 Kg
16.10104	Brown	Cartridge 310 ml	12 Cartridges / Box	1.560 Cart. / ~640 Kg
16.10105	Beige	Cartridge 310 ml	12 Cartridges / Box	1.560 Cart. / ~640 Kg
16.10001	White	Unipack 600 ml	20 Unipacks / Box	1.000 Unip. / ~800 Kg
16.10002	Grey	Unipack 600 ml	20 Unipacks / Box	1.000 Unip. / ~800 Kg
16.10003	Black	Unipack 600 ml	20 Unipacks / Box	1.000 Unip. / ~800 Kg
16.10004	Brown	Unipack 600 ml	20 Unipacks / Box	1.000 Unip. / ~800 Kg
16.10005	Beige	Unipack 600 ml	20 Unipacks / Box	1.000 Unip. / ~800 Kg



U-SEAL 816-T (Thixotropic)

SHORT DESCRIPTION & APPLICATIONS

New technology, thixotropic, one component, soft, polyurethane sealing material of increased chemical resistance, with special resistance in fuels, oils, hydrocarbons etc. Suitable for industrial applications, parking lots, flooring joints, gas stations, refineries, airports-hangars, etc. For horizontal flooring applications, we recommend, for easiness, the use of the equivalent but leveling U-SEAL 816.

CONSUMPTION INFORMATION

Indicatively, the 600 ml unipack seals approx. 6 linear meters of joint 1 x 1 cm.

CODIFICATION	COLOR	PACKAGING	PACKAGING INFO	PALLET
16.09002	Grey	Unipack 600 ml	20 Unipacks / Box	1.000 Unip. / ~800 Kg



U-SEAL 816 (Leveling)

SHORT DESCRIPTION & APPLICATIONS

New technology, leveling, one component, soft, polyurethane sealing material of increased chemical resistance, with special resistance in fuels, oils, hydrocarbons, etc. Suitable for industrial applications, parking lots, flooring joints, gas stations, refineries, airports-hangars, etc. Due to its fluidity, it levels very easily and is suitable only for horizontal flooring applications.

CONSUMPTION INFORMATION

Indicatively, the 600 ml unipack seals approx. 6 linear meters of joint 1 x 1 cm.

CODIFICATION	COLOR	PACKAGING	PACKAGING INFO	PALLET
16.09001	Grey	Unipack 600 ml	20 Unipacks / Box	1.000 Unip. / ~800 Kg



SIMP® SEAL 55

SHORT DESCRIPTION & APPLICATIONS

New technology, SIMP®, environmental friendly, one component, very powerful, bonding and sealing material. Excellent resistance in external conditions, without discoloration. Paintable without producing bubbles and useful for medium traffic joints. Ideal for sealing panels, frames, metal constructions, building facades, where the material's stability and aesthetics play an important role. Applicable in a wet environment.

CONSUMPTION INFORMATION

Indicatively, the 600 ml unipack seals approx. 6 linear meters of joint 1 x 1 cm and, correspondingly, the 290 ml cartridge seals approx. 3 linear meters of joint 1 x 1 cm.

CODIFICATION	COLOR	PACKAGING	PACKAGING INFO	PALLET
16.06001	White	Cartridge 290 ml	12 Cartridges / Box	1.560 Cart. / ~640 Kg
16.06007	Grey	Cartridge 290 ml	12 Cartridges / Box	1.560 Cart. / ~640 Kg
16.06005	Black	Cartridge 290 ml	12 Cartridges / Box	1.560 Cart. / ~640 Kg
16.06002	White	Unipack 600 ml	20 Unipacks / Box	1.000 Unip. / ~800 Kg
16.06003	Grey	Unipack 600 ml	20 Unipacks / Box	1.000 Unip. / ~800 Kg
16.06006	Black	Unipack 600 ml	20 Unipacks / Box	1.000 Unip. / ~800 Kg



SiMP® CLEAR

SHORT DESCRIPTION & APPLICATIONS

New technology, SiMP®, environmental friendly, one component, transparent, sealing and bonding product with good resistance in external conditions. Suitable for high aesthetics applications, where sealing-bonding with a transparent and resistant material is an important advantage.

CONSUMPTION INFORMATION

Indicatively, the 600 ml unipack seals approx. 6 linear meters of joint 1 x 1 cm and, correspondingly, the 290 ml cartridge seals approx. 3 linear meters of joint 1 x 1 cm.

CODIFICATION	COLOR	PACKAGING	PACKAGING INFO	PALLET
16.06004	Transparent	Cartridge 290 ml	12 Cartridges / Box	1.560 Cart. / ~640 Kg
16.06008	Transparent	Unipack 600 ml	20 Unipacks / Box	1.000 Unip. / ~800 Kg



SiMP® SEAL 25 HM

SHORT DESCRIPTION & APPLICATIONS

New technology, SiMP®, environmental friendly, one component, general purpose, sealing and bonding product. Excellent resistance in external conditions, without discoloration. It can be painted, without appearance of bubbles, while it is useful in medium or high movement joints. Suitable for general sealing and bonding applications, on a big variety of substrates, like metal, glass, wood, concrete, mortars and plasters, painted surfaces, synthetic materials, cement boards, gypsum boards and many more. It can be applied on humid environment.

CONSUMPTION INFORMATION

Indicatively, the 600 ml unipack seals approx. 6 linear meters of joint 1 x 1 cm and, correspondingly, the 310 ml cartridge seals approx. 3 linear meters of joint 1 x 1 cm.

CODIFICATION	COLOR	PACKAGING	PACKAGING INFO	PALLET
16.15001	White	Cartridge 290 ml	12 Cartridges / Box	1.560 Cart. / ~640 Kg
16.15002	Grey	Cartridge 290 ml	12 Cartridges / Box	1.560 Cart. / ~640 Kg
16.15003	Black	Cartridge 290 ml	12 Cartridges / Box	1.560 Cart. / ~640 Kg
16.15004	Light Beige	Cartridge 290 ml	12 Cartridges / Box	1.560 Cart. / ~640 Kg
16.15101	White	Unipack 600 ml	20 Unipacks / Box	1.000 Unip. / ~800 Kg
16.15102	Grey	Unipack 600 ml	20 Unipacks / Box	1.000 Unip. / ~800 Kg
16.15103	Black	Unipack 600 ml	20 Unipacks / Box	1.000 Unip. / ~800 Kg
16.15104	Light Beige	Unipack 600 ml	20 Unipacks / Box	1.000 Unip. / ~800 Kg



SiMP® SEAL 20

SHORT DESCRIPTION & APPLICATIONS

New technology, SiMP®, environmental friendly, one component, general purpose, very elastic, sealing product. Excellent resistance in external conditions, without discoloration. It can be painted, without appearance of bubbles, while it is useful in high movement joints. Suitable for general sealing applications, on a big variety of substrates, like metal, glass, wood, concrete, mortars and plasters, painted surfaces, synthetic materials, cement boards, gypsum boards and many more. It can be applied on humid environment.

CONSUMPTION INFORMATION

Indicatively, the 600 ml unipack seals approx. 6 linear meters of joint 1 x 1 cm.

CODIFICATION	COLOR	PACKAGING	PACKAGING INFO	PALLET
16.16102	White	Unipack 600 ml	20 Unipacks / Box	1.000 Unip. / ~800 Kg
16.16101	Grey	Unipack 600 ml	20 Unipacks / Box	1.000 Unip. / ~800 Kg



U-PRIMER 110

SHORT DESCRIPTION & APPLICATIONS

One component, deep penetration, polyurethane based primer for sealing and bonding products on absorbent substrates, such as concrete, mortars, wood, marbles, granites, ceramics etc.

CONSUMPTION INFORMATION

Indicatively, the consumption is ~150 ml/m². Proportionately, ~1,7 m² or ~50 linear meters of joint with depth each side 1,5 cm per 250 ml pail.

CODIFICATION	COLOR	PACKAGING	PACKAGING INFO	PALLET
16.03002	Transparent	Pail 250 ml	12 Pails / Box	-
16.03001	Transparent	Pail 1,000 ml	8 Pails / Box	-



ACTIVATOR 400NP

SHORT DESCRIPTION & APPLICATIONS

Cleaner-energizer and primer for non absorbent surfaces. Easy to use with a cloth. Co-works with U-PRIMER 130 (primer for metal, plastic, glass). For special bonding and sealing on difficult metallic or plastic surfaces, please contact with PENETRON HELLAS technical department.

CONSUMPTION INFORMATION

Indicatively, the consumption for non absorbent surfaces is ~40 ml/m² for application with a cotton cloth, or, proportionately, ~6,0 m² per 250 ml pail.

CODIFICATION	COLOR	PACKAGING	PACKAGING INFO	PALLET
16.03004	Transparent	Pail 250 ml	12 Pails / Box	-



U-PRIMER 130

SHORT DESCRIPTION & APPLICATIONS

New technology, special primer for non absorbent surfaces such as metal, plastic, glass. Black color, application with brush. Many times, it follows the preparation with ACTIVATOR 400NP. For special bonding and sealing on difficult metallic or plastic surfaces, please contact with PENETRON HELLAS technical department.

CONSUMPTION INFORMATION

Indicatively, the consumption is 50-150 ml/m². Proportionately, 1,7-5,0 m² per 250 ml pail. The consumption is according to the surface quality.

CODIFICATION	COLOR	PACKAGING	PACKAGING INFO	PALLET
16.03006	Black	Pail 250 ml	12 Pails / Box	-



PENETRON® BACKING ROD

SHORT DESCRIPTION & APPLICATIONS - CONSUMPTION INFORMATION

PE backing rod used as base for the sealing products in construction joints. Calculation in linear meters.

CODIFICATION	COLOR	PACKAGING	PACKAGING INFO	PALLET
17.00006	White/Grey	Ø 6 mm	1.500 m / Box	-
17.00008	White/Grey	Ø 8 mm	1.200 m / Box	-
17.00010	White/Grey	Ø 10 mm	680 m / Box	-
17.00015	White/Grey	Ø 15 mm	250 m / Box	-
17.00020	White/Grey	Ø 20 mm	180 m / Box	-
17.00025	White/Grey	Ø 25 mm	100 m / Box	-
17.00030	White/Grey	Ø 30 mm	100 m / Box	-
17.00040	White/Grey	Ø 40 mm	200 m / Box	-
17.00050	White/Grey	Ø 50 mm	130 m / Box	-
17.00060	White/Grey	Ø 60 mm	80 m / Box	-

SUPPORTING EQUIPMENT AND TOOLS



23 L MIXING PAIL

Mixing pail with 1-15 L measure for mortars, coatings, etc.
(additional 11.5 L of water orange indication for ½ bag PENETRON® ADMIX).

CODIFICATION	COLOR	PACKAGING	PACKAGING INFO	PALLET
10.99001	White	Piece	-	-



23 L MIXING PAIL LID

Lid with rubber-band for sealing the 23 L Mixing Pail, while storing mortars.

CODIFICATION	COLOR	PACKAGING	PACKAGING INFO	PALLET
10.99002	Orange	Piece	-	-



PLASTIC PAIL OPENER

Plastic opener for the safe opening of PENESEAL PRO® RTU, PENESEAL™ FH and PENESEAL™ FH-PS pails.

CODIFICATION	COLOR	PACKAGING	PACKAGING INFO	PALLET
10.98001	Yellow	Piece	-	-



METALLIC PAIL OPENER

Metallic opener, reusable, for professional use, for the safe opening of PENESEAL PRO® RTU, PENESEAL™ FH and PENESEAL™ FH-PS pails.

CODIFICATION	COLOR	PACKAGING	PACKAGING INFO	PALLET
10.98002	Silver	Piece	-	-



CALCIUM PROPIONATE (GRANURAL)

Calcium Propionate (granural), for the concrete re-carbonation process. The methodology is used in combination with the application of PENESEAL PRO® RTU, on old concrete surfaces, with increased carbonation.

NEW PRODUCT

CODIFICATION	COLOR	PACKAGING	PACKAGING INFO	PALLET
90.00026	White	Pail 0,5 Kg	-	-
90.00024	White	Bag 20 Kg	-	-



PHENOLOPHTHALINE

Phenolphthalein solution, for the determination of concrete pH.

CODIFICATION	COLOR	PACKAGING	PACKAGING INFO	PALLET
90.00019	Transparent	Glass cartridge 50 ml	-	-
-	NEW Transparent	Glass cartridge 100 ml	-	-



VISCOSITY CUP

Plastic cup, for measuring viscosity of water soluble injection resins (e.g. PENETRON® INJECT)

CODIFICATION	COLOR	PACKAGING	PACKAGING INFO	PALLET
10.99002	Yellow	Piece	-	-



HOPPER GUN

The most advanced sandblasting sprayer available. An adjusting bolt allows the trigger to be fully pulled into any spray settings, there are also marks on both sides of the sprayer to indicate the supply adjustment. It is equipped with a 7,5 liter tank.

CODIFICATION	COLOR	PACKAGING	PACKAGING INFO	PALLET
15.81101	Blue	Item	-	-



DESOI SP20

Spiral pump for mortar injections or for spraying cementitious coatings. Bucket capacity 30 L. Weight ~25 Kg. Maximum aggregate grain diameter 3 mm.

NEW PRODUCT

CODIFICATION	COLOR	PACKAGING	PACKAGING INFO	PALLET
15.84106	Blue-Black	Item	-	-



MOISTURE CONCRETE ENCOUNTER TRAMEX CME4

Easy and accurate portable instrument for measuring moisture content (MC) in concrete and mortars, with non-destructive testing (NDT). Use for applications in industrial floors, surface coatings and concrete waterproofing.

NEW PRODUCT

CODIFICATION	COLOR	PACKAGING	PACKAGING INFO	PALLET
90.40100	Black	Item	-	-



WELDING PVC TAPE FOR P-WATERSTOPS

Flexible PVC tape for welding and sealing connections of P-WATERSTOPS. Rolls of 15 linear m with a 30 mm width and 4 mm thickness.

NEW PRODUCT

CODIFICATION	COLOR	PACKAGING	PACKAGING INFO	PALLET
20.10020	Blue	Roll 15 m	-	-

TOWARDS ZERO CARBON CONCRETE

PENETRON, with its advanced crystal growth technology, actively contributes to the sustainable development of concrete projects, ensuring permanent waterproofing and durability in new and existing constructions.

For new concrete constructions

PENETRON ADMIX® P system, with an upgraded 3rd generation crystal growth admixture that reduces the water permeability of concrete, thus providing total protection against deterioration due to aggressive corrosive agents, such as chlorides, carbonation, chemical attack and frost.
Use with low CFP cements and common cement types.

Combines with **PENEBAR® SW** or **P-WATERSTOPS** joint waterbarriers, as well as **PENETRON®** crystal growth repairing products for total waterproofing and protection of new concrete structures.



For existing concrete structures



PENETRON® system, with a crystal growth slurry, which includes repair, rapid-setting and injection mortars of the same technology, for waterproofing, durable and permanent protection of existing concrete structures.



GENERAL SALES TERMS OF PENETRON HELLAS SA

1. The general sales terms count for all commercial transactions between the parties involved, unless otherwise agreed in written. Placing an order means that the client has unconditionally and irrevocably accepted these terms.
2. The sales agreement is commonly accepted to have been contracted at our registered office of our company.
3. **Products delivery.** The ownership of the products remains at our company until the full and final payment of their value.
4. **Orders.** Orders are submitted from the client and are accepted from us within the agreed time limit. Failure of payment within the specified time limit entitles us, without previous warning, to cancel the purchase due to the buyer's delay of payment. In case of late payment from the client our company reserves the right to stop the cooperation with him without any prior notice or warning. Our company is not liable for any loss or damage to the client from non execution in all or in part of the order due to late payment.
5. **Receipt of products.** The buyer, or anyone authorized by him, is collecting the products from the warehouse of our company. By signing the relative document, he is responsible for the correctness of the entire receipt. In case that the products are to be sent out of Attica region, they are delivered to a transport company of the buyer's choice. The transport cost is borne by the buyer and the goods travel on behalf, at the risk and responsibility of the buyer. In case of delivery in Attica region by transport means of the company, the goods are delivered and checked on the pavement. The buyer is obliged to check the prices of the goods when delivered.
6. **Delivery time.** The average delivery time of goods is between two (2) and four (4) working days. The above specified time of delivery the goods to the buyer is fully indicative and any failure of our company to comply with the above does not result to buyer's right of compensation.
7. **Limitation of liability.**
 - A. Our company reserves the right to the delivery time of the products in case of delays, the cause of which is outside the scope of our responsibility. Indicatively, the company is not responsible for any delay in the execution of all or part of the order in the following cases:
 - i. The company reserves the right to the delivery time of the products which come from abroad and which, due to delays in customs or other insurmountable circumstances, may not be available in its warehouses at the expected time. In that case, the company has to inform the customer accordingly.
 - ii. In case of extreme weather conditions or strikes, or even in any case of force majeure that may affect the delivery of the order.
 - iii. In case of inability (by telephone or e-mail) to contact the customer.
 - B. The company is not liable to customers for any claims of any nature, nor for any positive or consequential damage, which may include loss of profits, lost profits, financial compensation that may arise from the execution or not of their order, without prejudice to the aforementioned return of defective product (see return policy). The company is not liable for the way the sold products are used. Compensation from destruction will be limited to the price of the products sold.
 - C. The Company reserves the right to adjust the price due to price changes of the raw materials.
8. **Return policy:** In general, it is recommended to the customer to check the state of the products and their packaging at the time of delivery, in order to detect any apparent defects or discrepancy between the order and the products delivered.
 - Under no circumstances returns of defective products due to poor maintenance or use by the customer or any other external cause will be accepted. In these cases, the product is returned to the customer without replacement and he is charged with the delivery cost.
 - In the above-mentioned cases (return of defective or wrong product), the return of the goods is accepted within 10 days from the date of receipt at the company's premises, provided that the products are in the same condition in which they were received and in their original packaging, accompanied by the relevant document.
 - In any case, before returning of the goods, prior notification and consultation with the company is required, which will provide advice on how the product should be returned and the general procedure to be followed. For any returns of goods made after 10 days from the date of receipt, the company reserves the right not to accept them.
 - In any case, the cost of returning the products is borne by the customer.
 - Returns are not accepted for products that are classified as "special order materials".
9. **Redemption:** The payment of invoices is due within 30 days (in case there is no other agreement) in cash or/ and checks or/ and bank deposit and only made with a receipt from our company. Failure to pay on time part or all of the value of the invoices will result to client's default and will be charged with the legal late payment interest due.
10. **Modification of current terms:** The company reserves the right to unilaterally modify and renew the terms of this document. Any subsequent change or addition shall not affect orders already placed.
11. **Confidentiality - Protection of Personal Data.** PENETRON HELLAS S.A. according to the new European Regulation (EU) 2016/679 and L. 4624/2019 regarding the protection of personal data, informs all interested parties of the following:
 - The company has adopted and applied an updated Personal Data Protection Policy of Partners/Suppliers/Clients, which is posted on its website.
 - The provision by you of your personal information (for example full name, profession, address, phone number, VAT number, tax office, e-mail) is carried out in the context of our transaction.
12. Any reproduction, use and any other kind of exploitation of the trademarks and distinctive titles of the company is prohibited.
13. The invalidity of any of the above General Sales Terms, does not affect the force and validity of the other General Terms.
14. **Jurisdiction of courts.** For any dispute arising from the application of the present terms, the Courts of Athens shall have jurisdiction, by applying the Greek law, and more specifically the Athens District Court and the Court of First Instance of Athens.

INDEX

23 L MIXING PAIL	52	PENEBAR® SW 55 TYPE A.....	19	PENETRON® GROUT INJECT	15, 22
23 L MIXING PAIL LID	52	PENEBAR® SW 55 TYPE B	19	PENETRON® INJECTION FOAM (F) Set (A+B)	15
ACTIVATOR 400NP	51	PENECLEANER™ A PLUS	29	PENETRON® INJECTION RESIN (SR) Set (A+B)	16
CALCIUM PROPIONATE (GRANURAL).....	52	PENECOAT™ CLEAR	27	PENETRON® INJECT Set (A+B).....	8, 15
CHEMORESIN PU-BETON 4006	41	PENECOAT™ CLEAR MAT FINISH	29	PENETRON® LATEX.....	20
CHEMORESIN PU-BETON 4012	41	PENECOAT™ CLEAR TILE PRIMER.....	29	PENETRON® MULTI PATCH.....	14, 22
CHEMORESIN PU-BETON 4051 PRIMER ..	41	PENECOAT™ ELASTIC.....	26	PENETRON® PLUS	9
CHEMORESIN PU-BETON 4080	42	PENECOAT™ ELASTIC PROFESSIONAL ...	26	PENETRON® PUMP FLUSH	16
COPPER TAPE	45	PENECOAT™ HYPER ELASTIC BLACK Set (A+B)	26	PENETRON® QUICK PATCH	23
DESOI SP20	53	PENECOAT™ POOL.....	31	PENETRON® QUICK PATCH	46
EP 28.....	32, 42	PENECOAT™ PU-H.....	28	PENETRON® SEAL COAT™	13
EP 50.....	33, 40	PENECOAT™ PU-L.....	28	PENETRON® V/O PATCH.....	21
EP 51 RAPID S.....	33	PENECOAT™ SF ELASTIC Set (A+B).....	30	PENETRON® WATERPLUG RAPID	14
EP 52 RAPID.....	33	PENECOAT™ SL Set (A+B).....	43	PENETRON ADMIX® P	8
EP 150	34	PENECOAT™ STABILIZER	13	PENETRON ADMIX®	8
EP 211 ESD	35, 40	PENECOAT™ TOP CLEAR.....	39	PENETRON ADMIX® P SOLUBLE BAGS.....	8
EP 216 UNIVERSAL	35	PENECRETE MORTAR®.....	9	PENETRON ADMIX® SOLUBLE BAGS.....	9
EP 280 WHG.....	35, 40	PENECRYL™ ELASTIC.....	13, 20	PHENOLOPHTHALINE	52
EP 282 WHG.....	36	PENEFLOOR™ HARDENER	12	PLASTIC PAIL OPENER	52
EP 740 E.....	37	PENEGUARD™	11	PREMIUM UNDERLAYMENT SL	46
EP 799 ABLEITGRUND	37, 40	PENEPLUG®.....	10	PRIMER STX 100™	21, 47
EP 860.....	39	PENEPOX™ SF PRIMER Set (A+B) ..	30, 32, 42	PU 410	36
EP 861.....	39	PENEPOX™ W Set (A+B).....	27, 31, 47	PU 420	36
EP 5530	32	PENEPRIMER™ PU.....	27, 34, 43	PU 484	37
FABRIC.....	30	PENESEAL PRO® RTU	11	PU 805 E	38
FIBERGLASS MESH	14	PENESEAL™ FH CONCENTRATE 1:1	11	PU 806 E	38
FIBERGLASS MESH VA 1040	44	PENESEAL™ FH-PS	11	PU 806 E WALL.....	38
FIXING CLIPS.....	18	PENESIL SILOX™	12	PU 811 E	38
HOPPER GUN	53	PENETRON®	8	PU 812 E	39
INDUSTRIAL TOPPING SL.....	46	PENETRON® ACRYLIC BONDCRETE™ ..	14, 20	P-WATERSTOP CORNER	18
METALLIC PAIL OPENER	52	PENETRON® ACRYLIC PATCH.....	21	P-WATERSTOP CROSS.....	18
MOISTURE CONCRETE ENCOUNTER TRAMEX CME4	53	PENETRON® ARC	10	P-WATERSTOPS FOR COLD JOINTS – EXTERNAL APPLICATION.....	16
PARTICOLOR®-CHIPS (Color FLAKES) 1 and 3	45	PENETRON® BACKING ROD	51	P-WATERSTOPS FOR COLD JOINTS – INTERNAL APPLICATION.....	17
PARTICOLOR®-GLITTER	45	PENETRON® BIOMIC®	10	P-WATERSTOPS FOR EXPANSION JOINTS – EXTERNAL APPLICATION.....	17
PENEBAR® PRIMER	20	PENETRON® CR-90.....	22, 47	P-WATERSTOPS FOR EXPANSION JOINTS	
PENEBAR® SW 45 RAPID TYPE A.....	19	PENETRON® GROUT	22		
PENEBAR® SW 45 RAPID TYPE B	19	PENETRON® GROUT FLOOR	23, 46		

PENETRON[®]

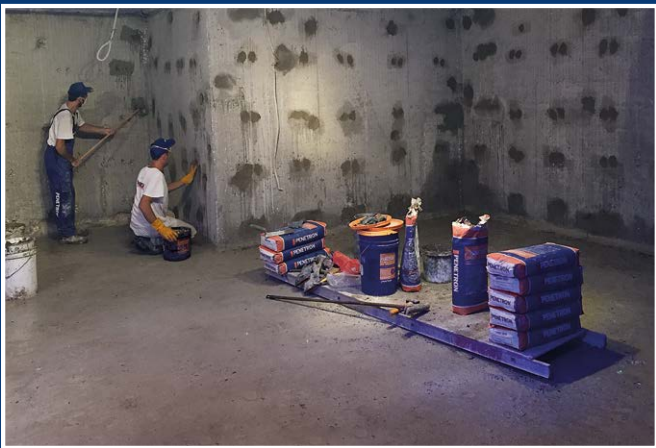
ADVANCED WATERPROOFING & PROTECTION SYSTEMS



CRYSTAL GROWTH



ELASTIC WATERPROOFING



REPAIRING SYSTEMS



SEALANTS & ADHESIVES

investing in «green» technology



5 successful decades in the global market

a world of innovations



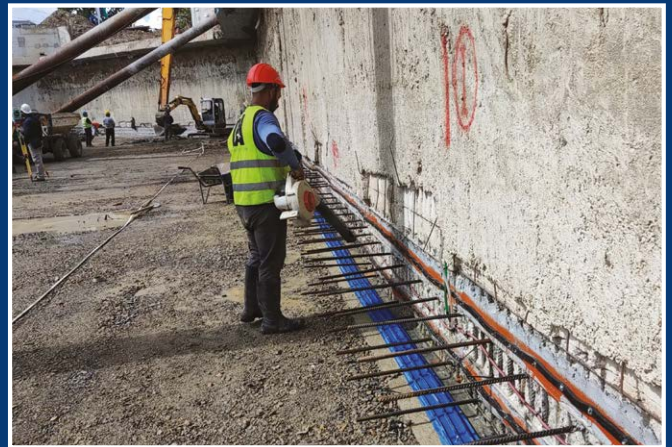
SWIMMING POOL SYSTEMS



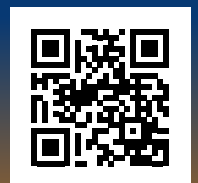
CHEMICAL PROTECTION

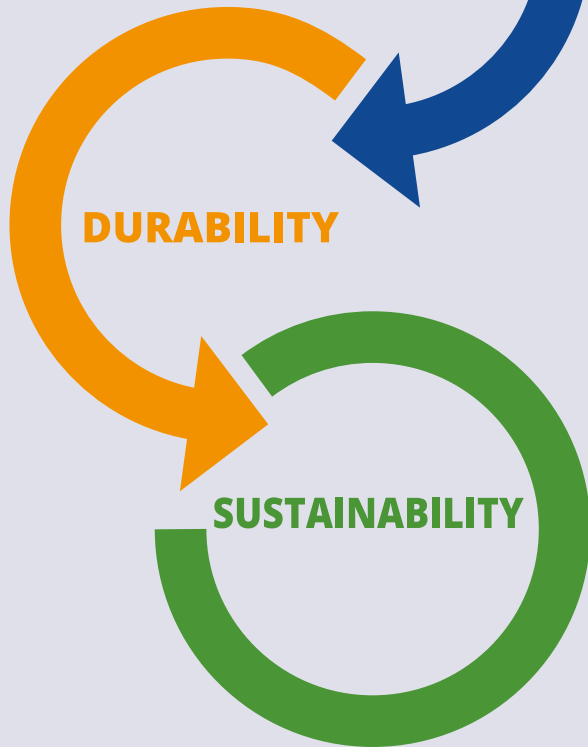


INTEGRAL PROTECTION



WATERSTOP SYSTEMS





TOWARDS ZERO CARBON CONCRETE

LOCAL DEALER:



Athens Headquarters - Greece
50, Thrakomakedonon Av.
136 79 Acharnes, Greece
T: +30 210 2448250

Thessaloniki Branch - N. Greece
Proektasi Makedonomachou Papanikolaou
570 05 Diavata, Delta Municipality
T: +30 231 065 6273

info@penetron.gr • www.penetron.gr

